



1392 Wakefield Valley Road New Windsor, MD 21776

Denise Parsons

240.506.1713

DParsons@HaganRealty.com



HAGAN REALTY



\$850,000



- Over 5 acres of useable, flat land
- Enter your home from the large asphalt drive at the end of a private lane



Bedrooms
3 Bedrooms



Bathrooms
3 Full



Home Size
3,584 SQFT



Lot Size
5.05 Acres



Levels
2 Levels



Year Built
1989



Parking
2-Car Garage



Taxes
\$5,916/year



Barn Stalls
5 Stalls



Arenas
**1 Indoor
1 Outdoor**



Storage
3 Sheds

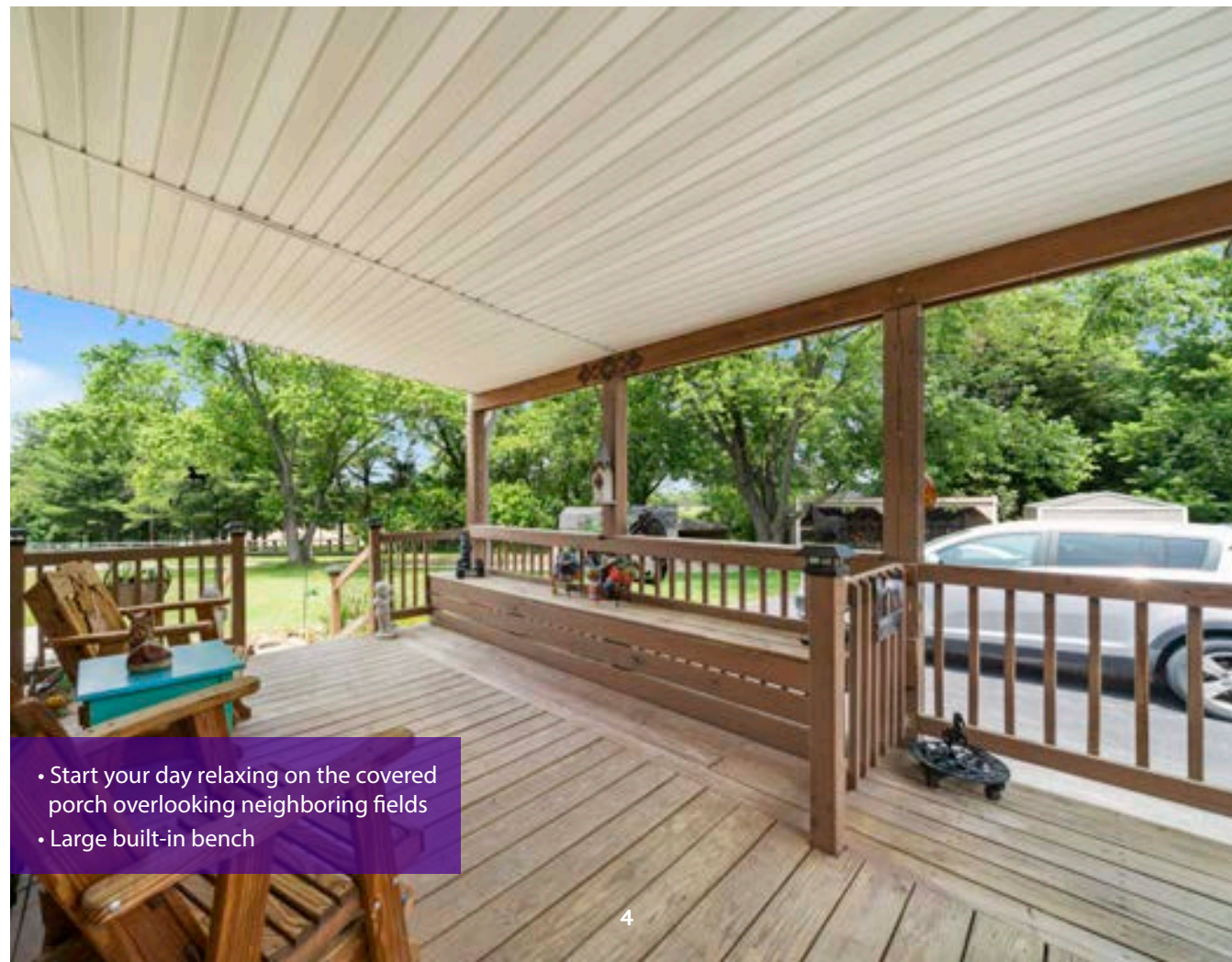


Schools
**Elmer A. Wolfe ES
Northwest MS
Francis Scott Key HS**



- Parking enough for all of your friends and family
- Separate stone driveway to the barn

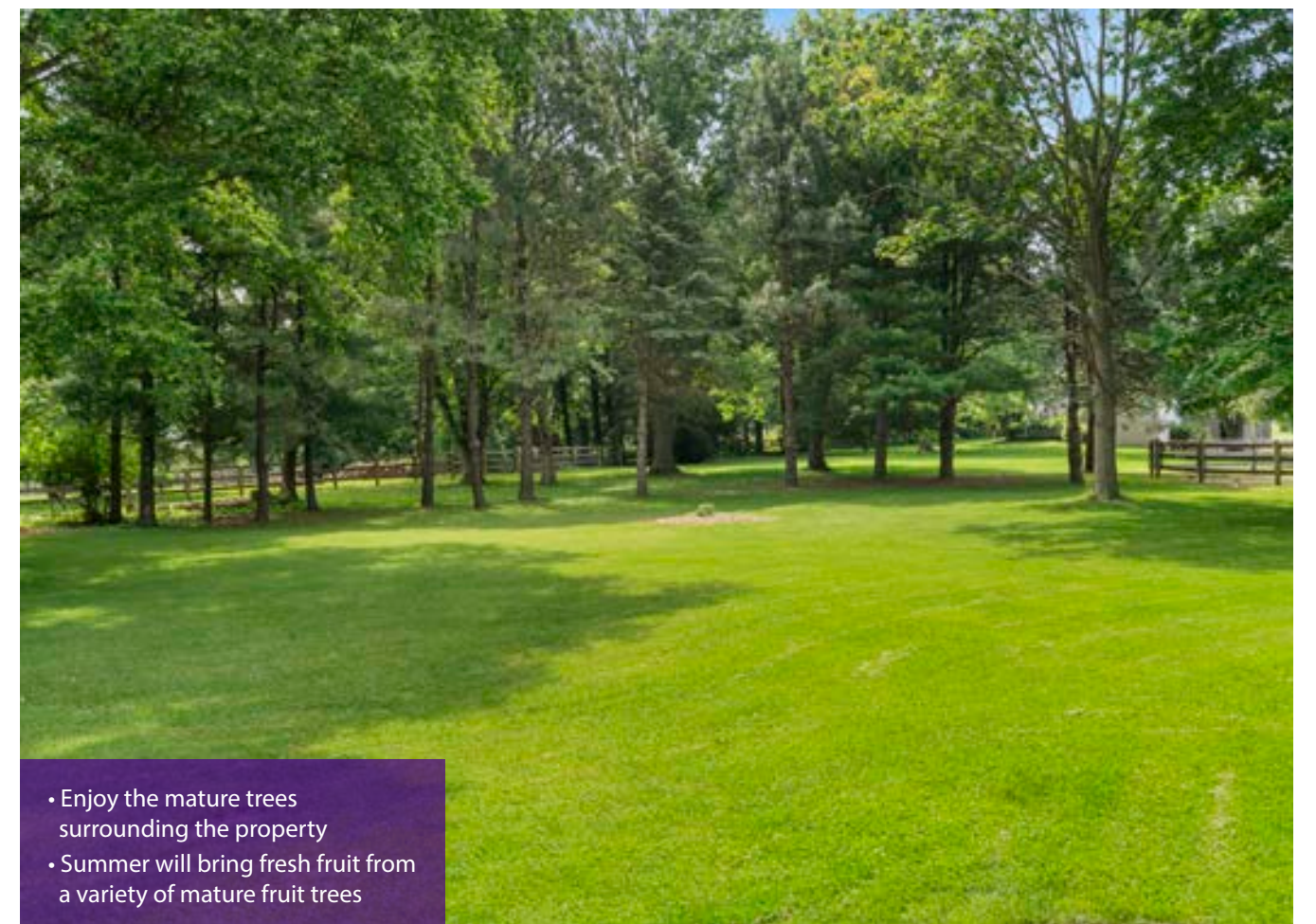
Front Porch



Deck



Backyard



Main Level



Foyer

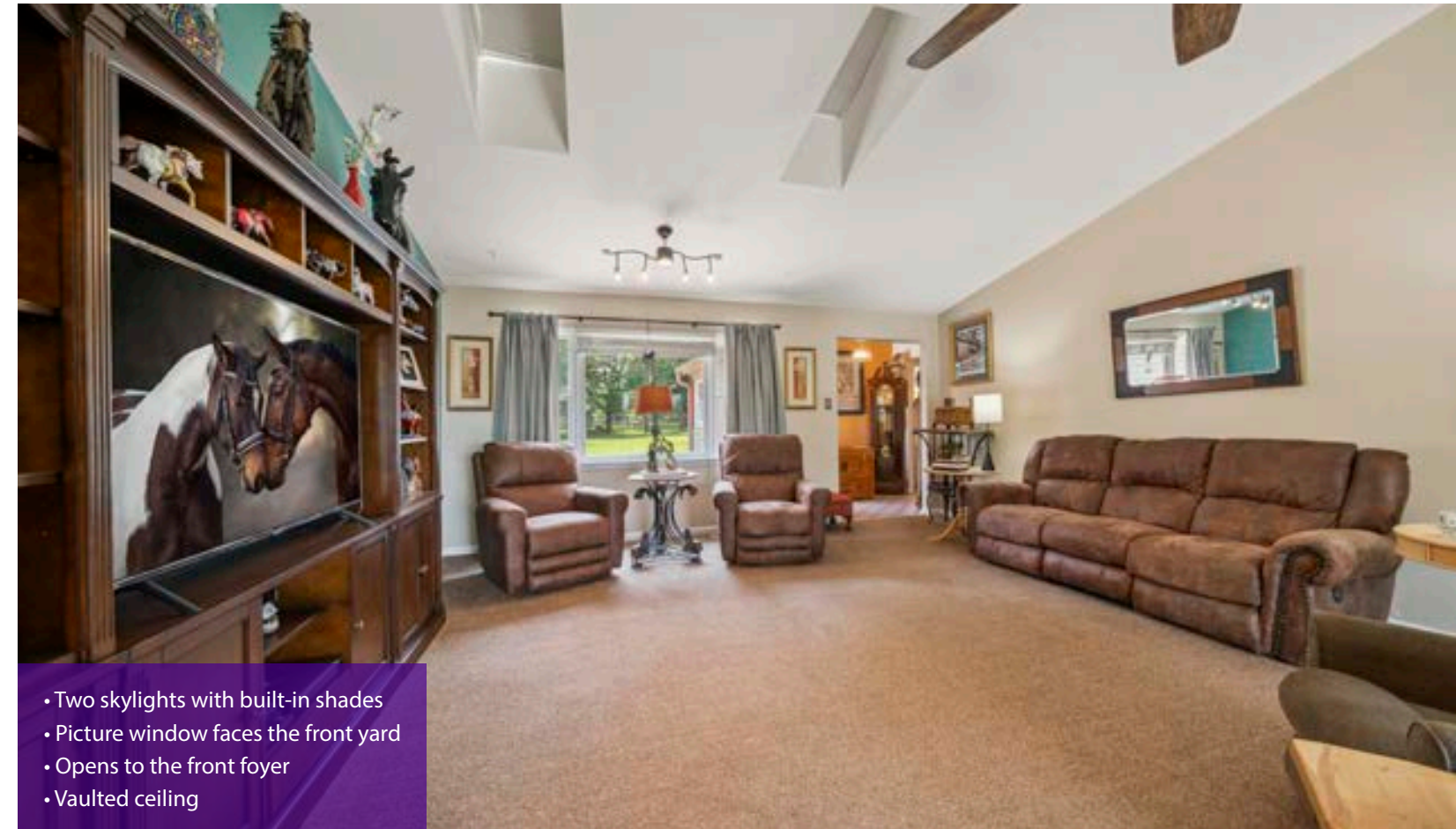


- Retro style front door with etched and frosted sidelight
- Ceramic tile floor

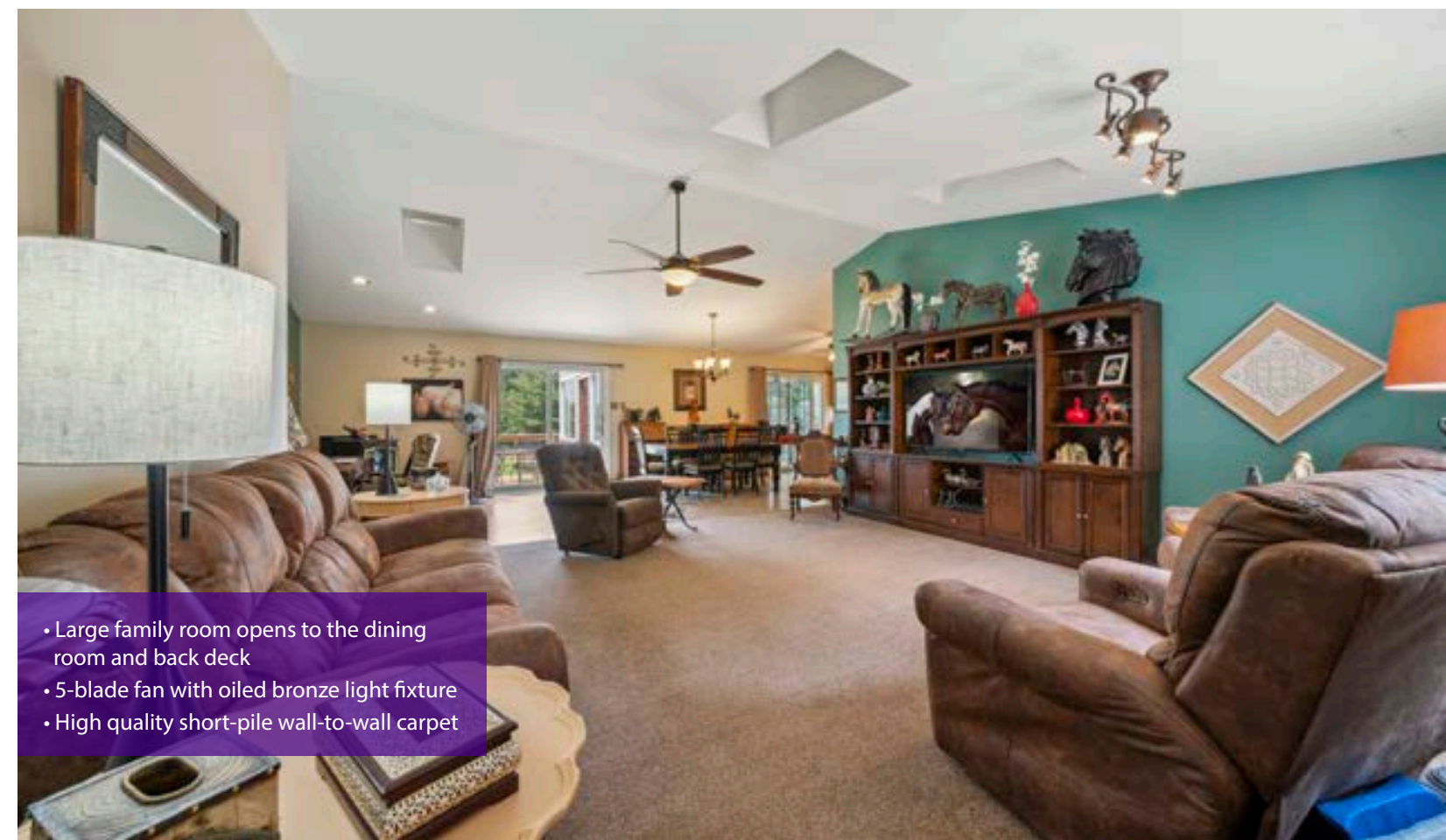


- Opens to the family room and hallway
- Retro style brass light fixture

Living Room



- Two skylights with built-in shades
- Picture window faces the front yard
- Opens to the front foyer
- Vaulted ceiling

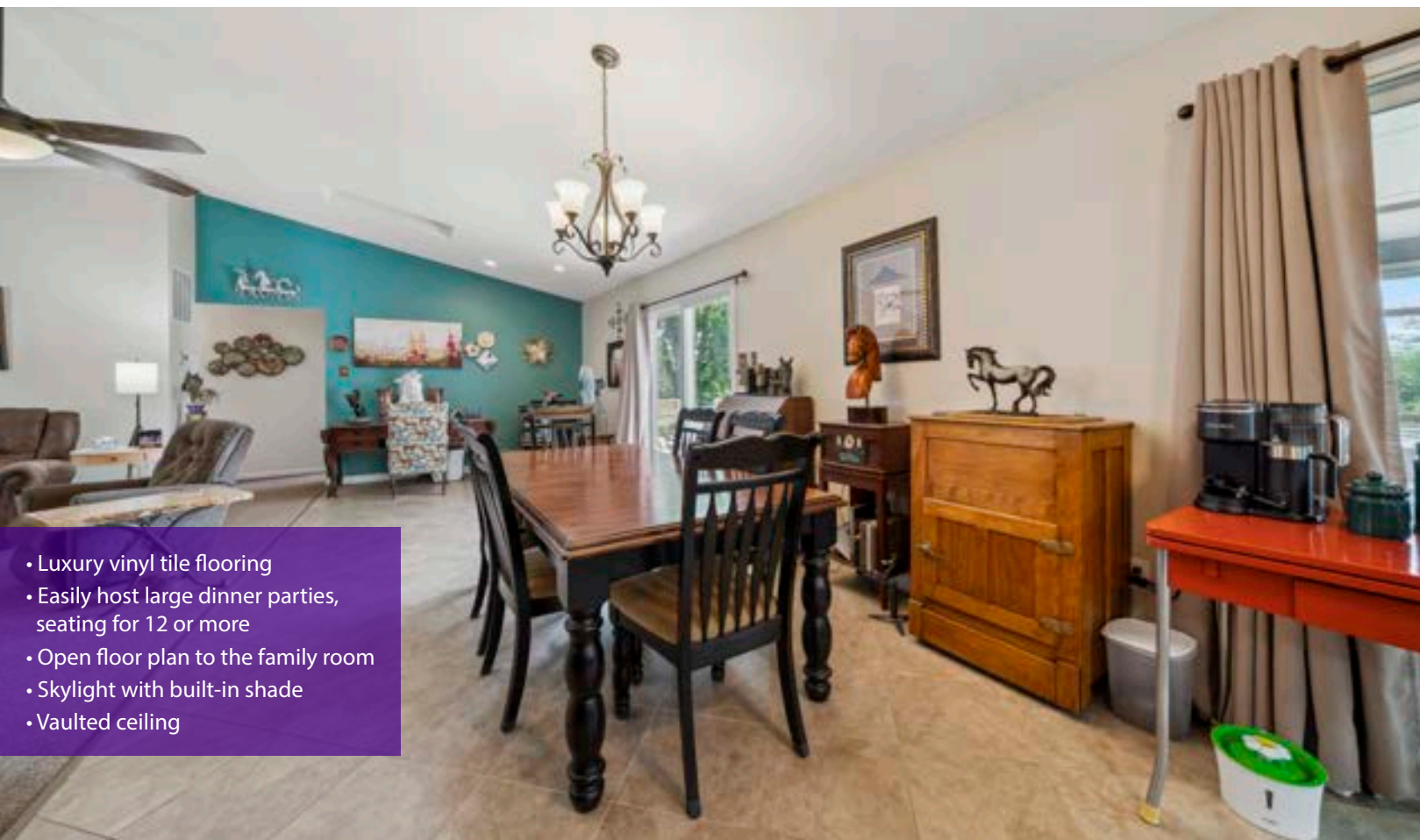


- Large family room opens to the dining room and back deck
- 5-blade fan with oiled bronze light fixture
- High quality short-pile wall-to-wall carpet

Dining Room



- Opens to the back deck through sliding glass doors
- Cast iron finish pellet stove
- Oiled bronze 5-light chandelier

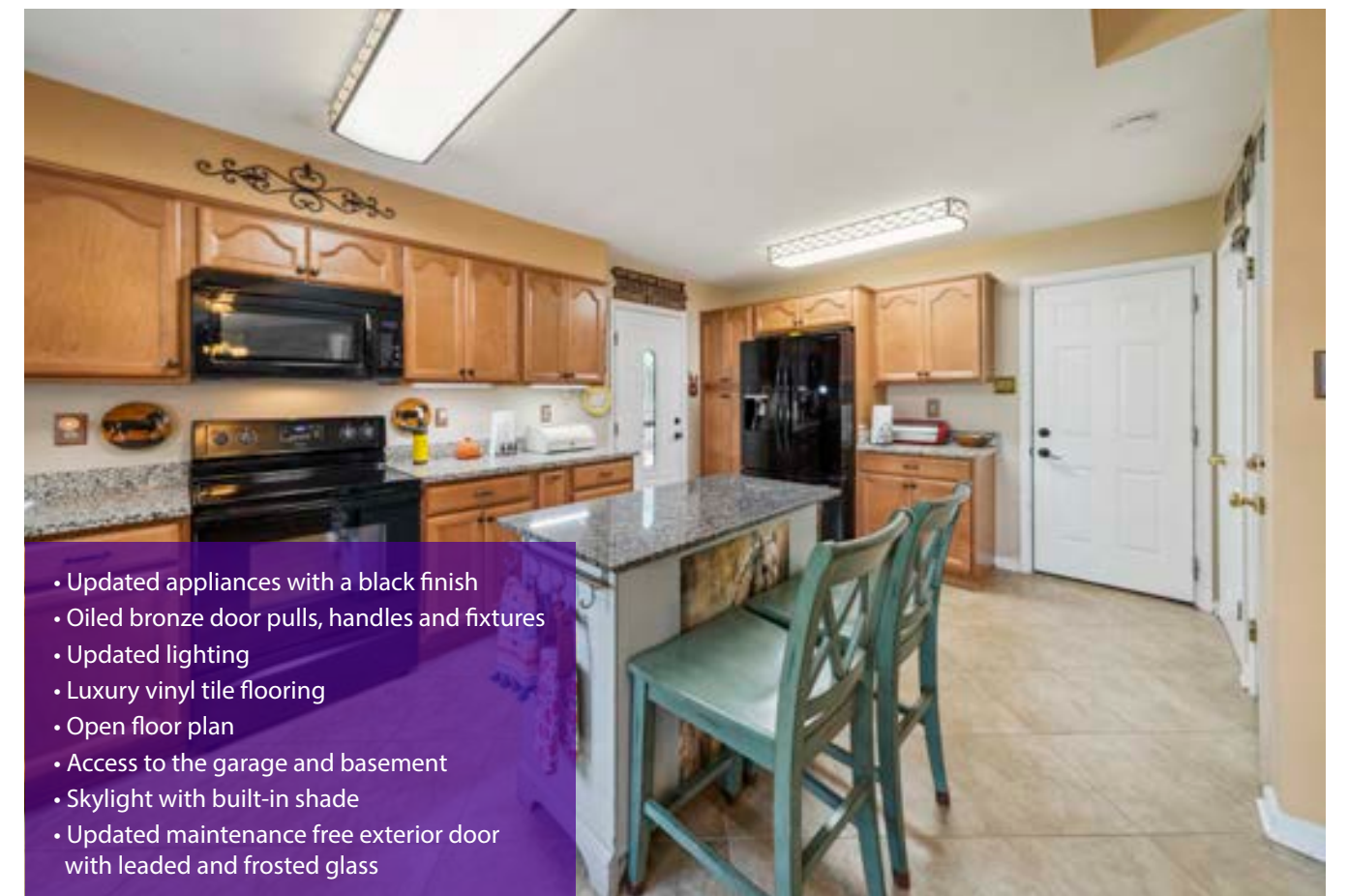


- Luxury vinyl tile flooring
- Easily host large dinner parties, seating for 12 or more
- Open floor plan to the family room
- Skylight with built-in shade
- Vaulted ceiling

Kitchen

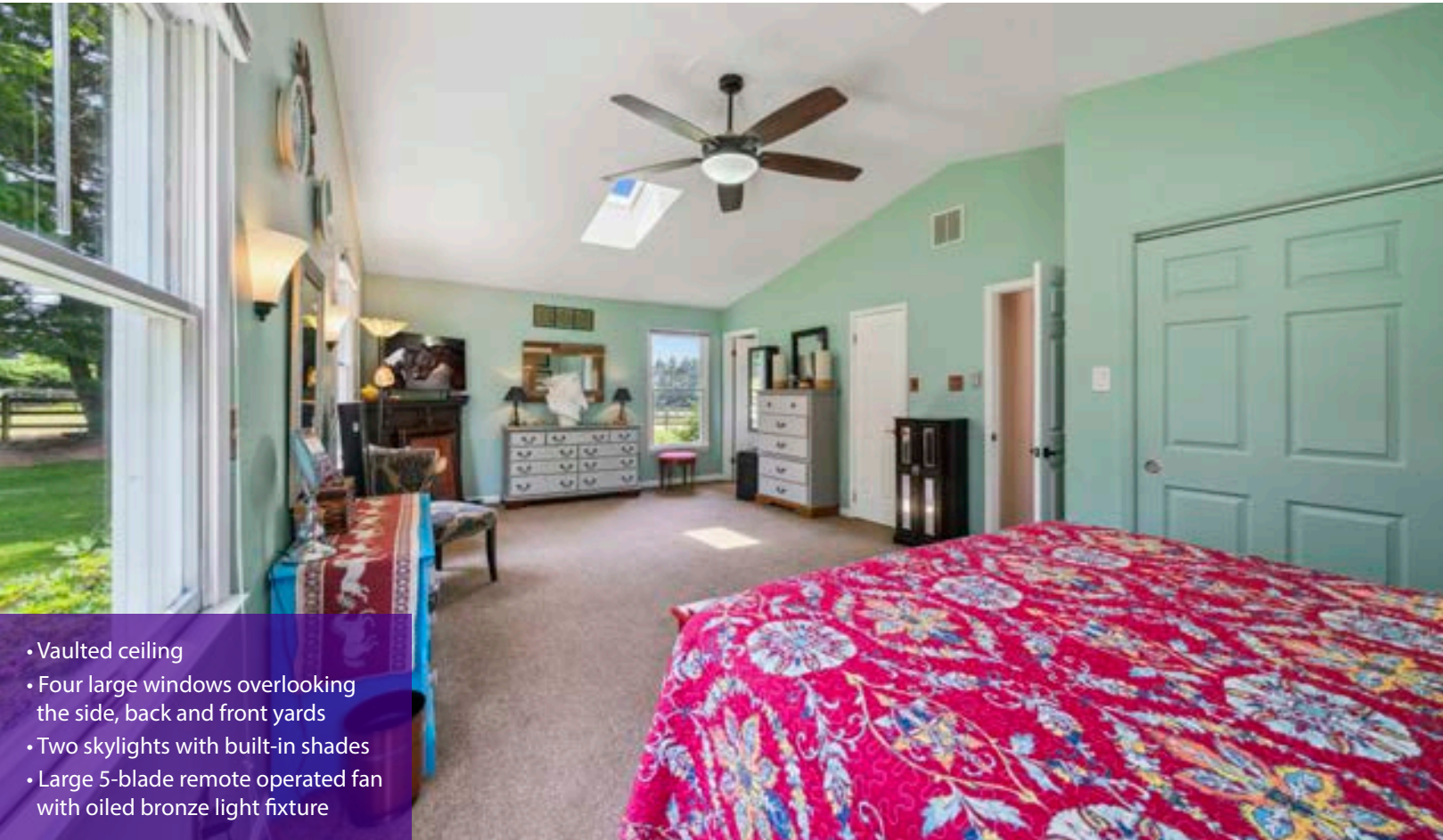


- Large updated custom kitchen
- Solid wood, soft close cabinets and drawers
- Granite countertops
- Custom country style center island with granite top
- Stainless steel double sink
- Large window overlooking the back yard and barn
- 5-blade fan with oiled bronze finish 4-light fixture

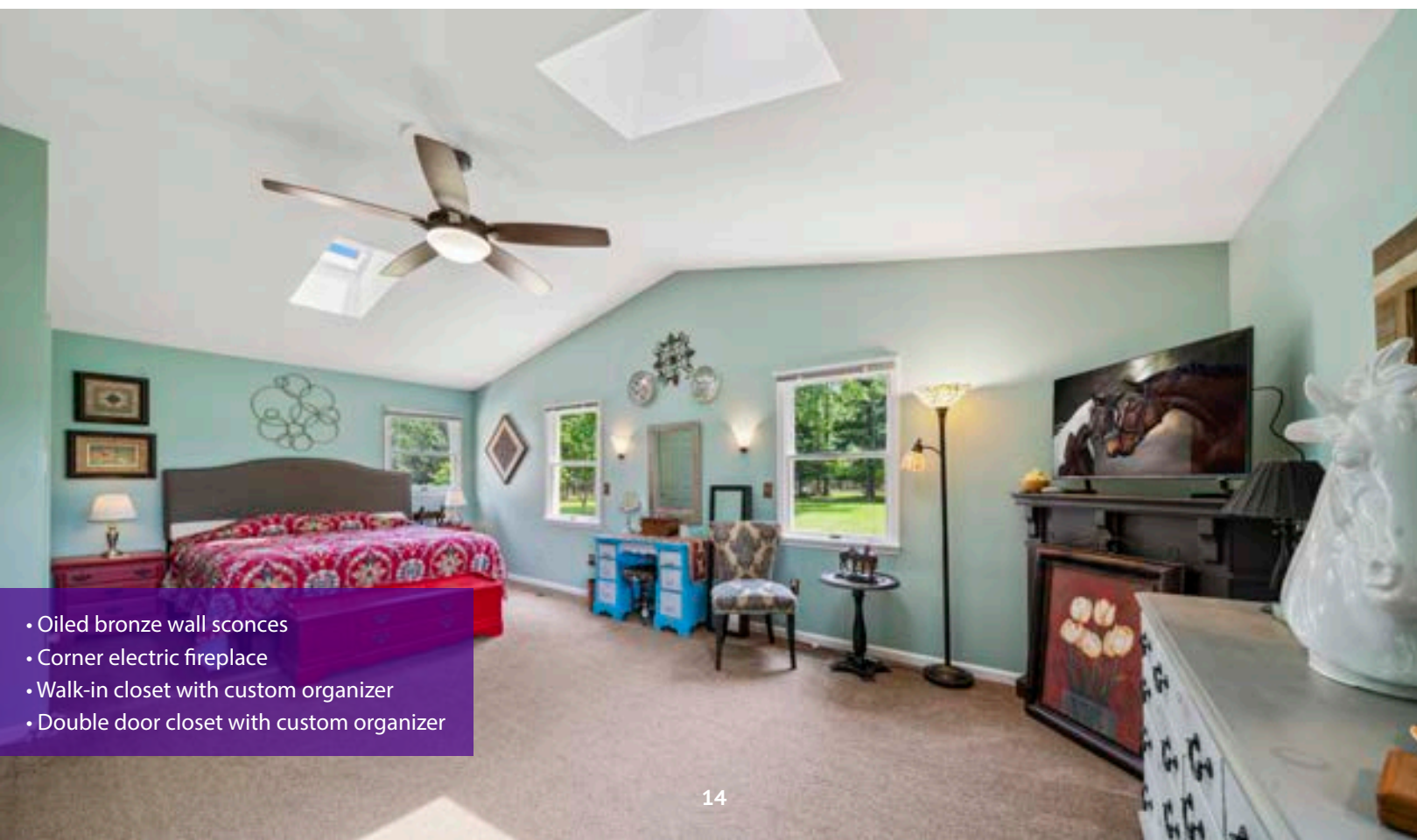


- Updated appliances with a black finish
- Oiled bronze door pulls, handles and fixtures
- Updated lighting
- Luxury vinyl tile flooring
- Open floor plan
- Access to the garage and basement
- Skylight with built-in shade
- Updated maintenance free exterior door with leaded and frosted glass

Primary Suite



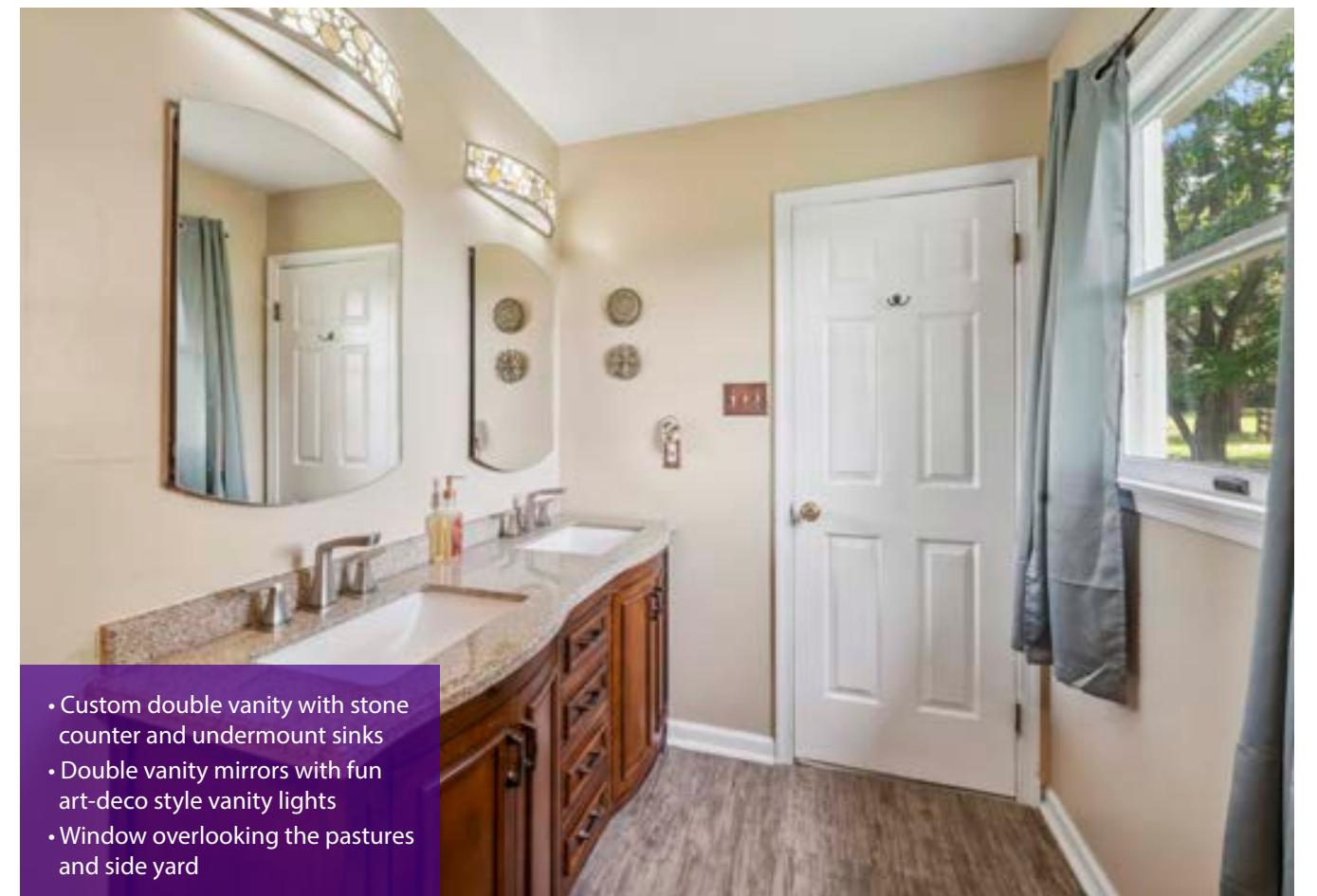
- Vaulted ceiling
- Four large windows overlooking the side, back and front yards
- Two skylights with built-in shades
- Large 5-blade remote operated fan with oiled bronze light fixture



- Oiled bronze wall sconces
- Corner electric fireplace
- Walk-in closet with custom organizer
- Double door closet with custom organizer

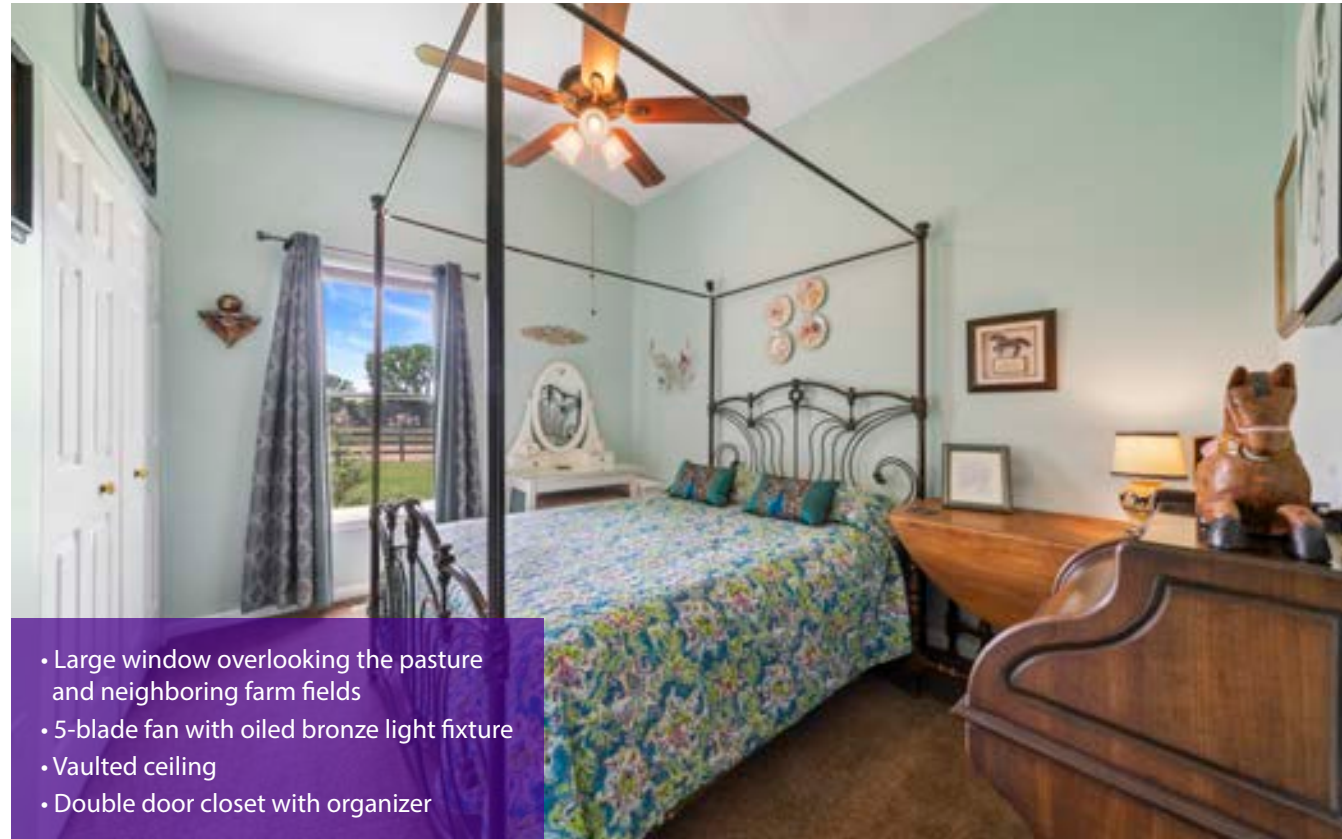


- Large custom shower with glass doors
- Shower features floor to ceiling custom tile work, tiled nooks and a seat
- Luxury vinyl plank flooring



- Custom double vanity with stone counter and undermount sinks
- Double vanity mirrors with fun art-deco style vanity lights
- Window overlooking the pastures and side yard

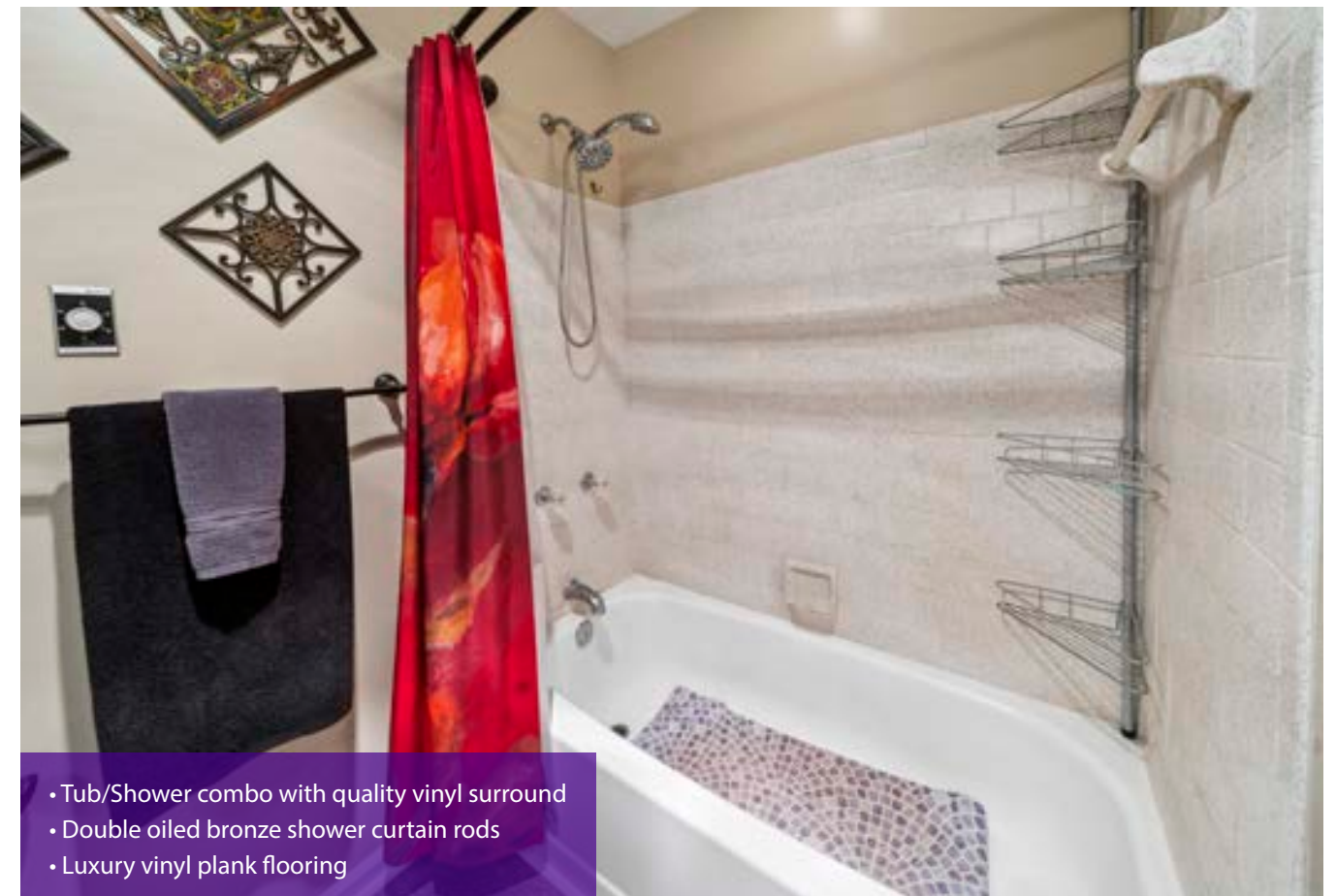
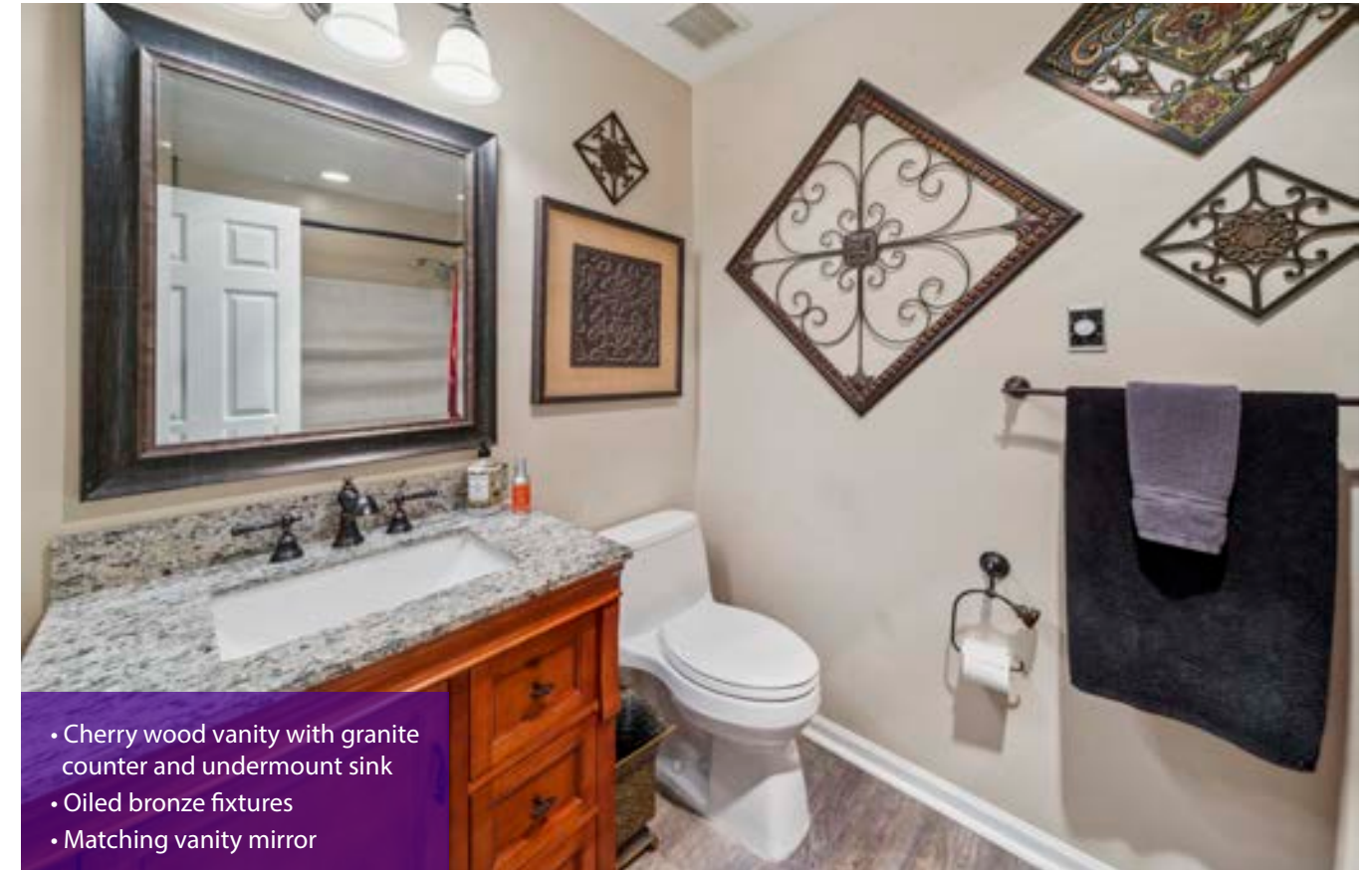
Second Bedroom



Third Bedroom



Full Bathroom



Laundry



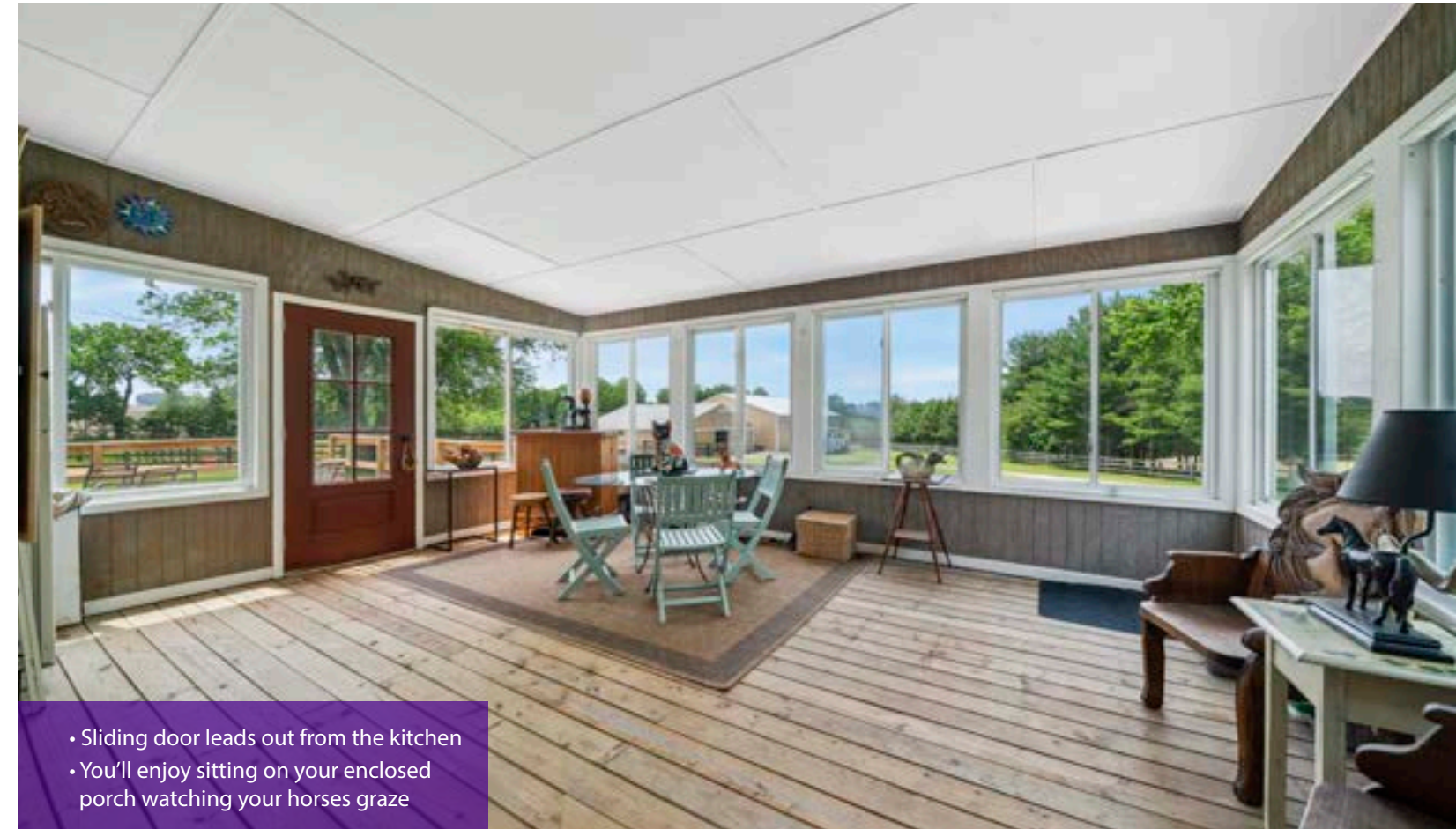
- Stackable Washer/Dryer for true single level living

Garage

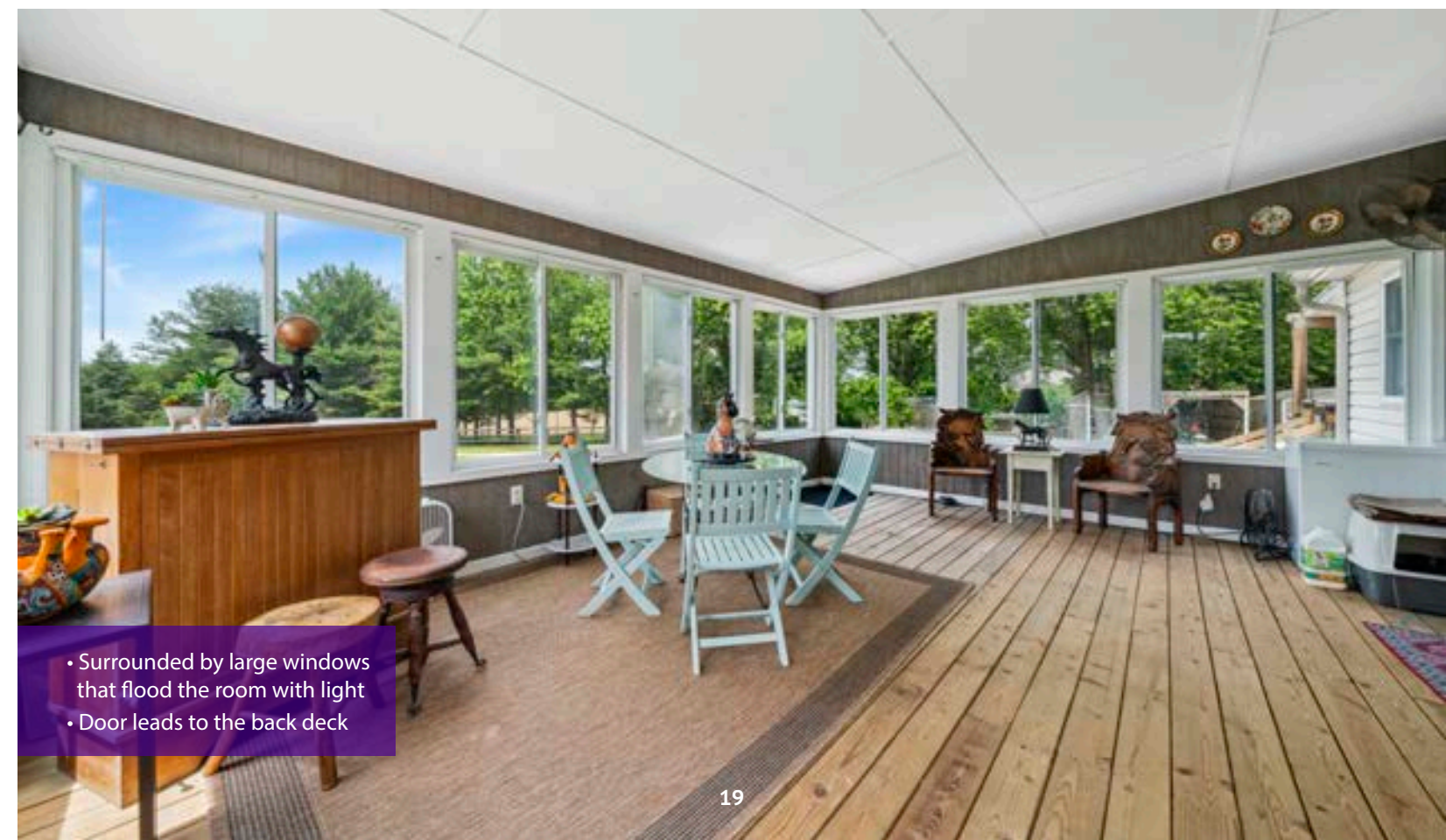


- Oversized 2-car garage
- Concrete flooring
- Garage door openers
- Opens to the kitchen

Sunroom



- Sliding door leads out from the kitchen
- You'll enjoy sitting on your enclosed porch watching your horses graze



- Surrounded by large windows that flood the room with light
- Door leads to the back deck

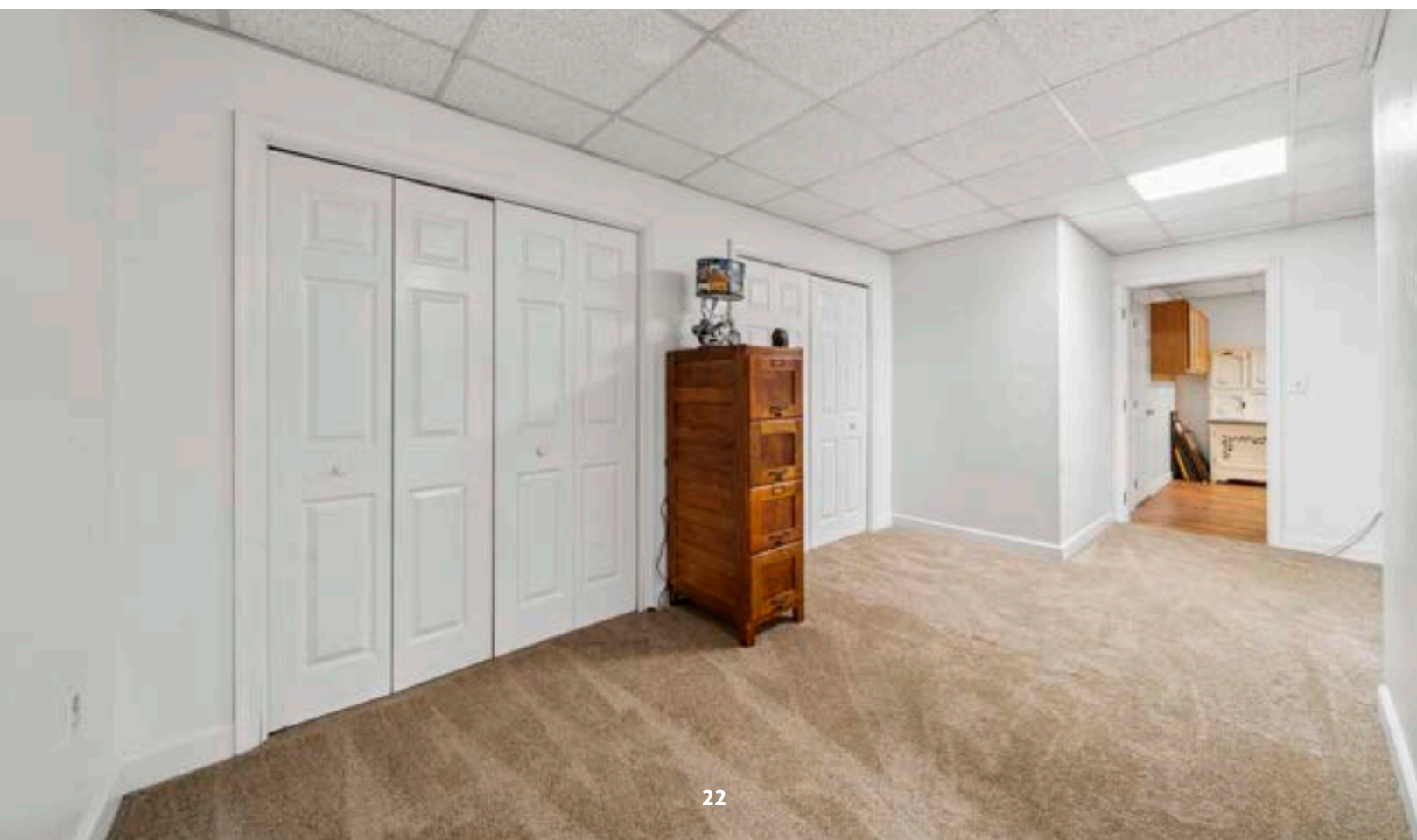
Basement



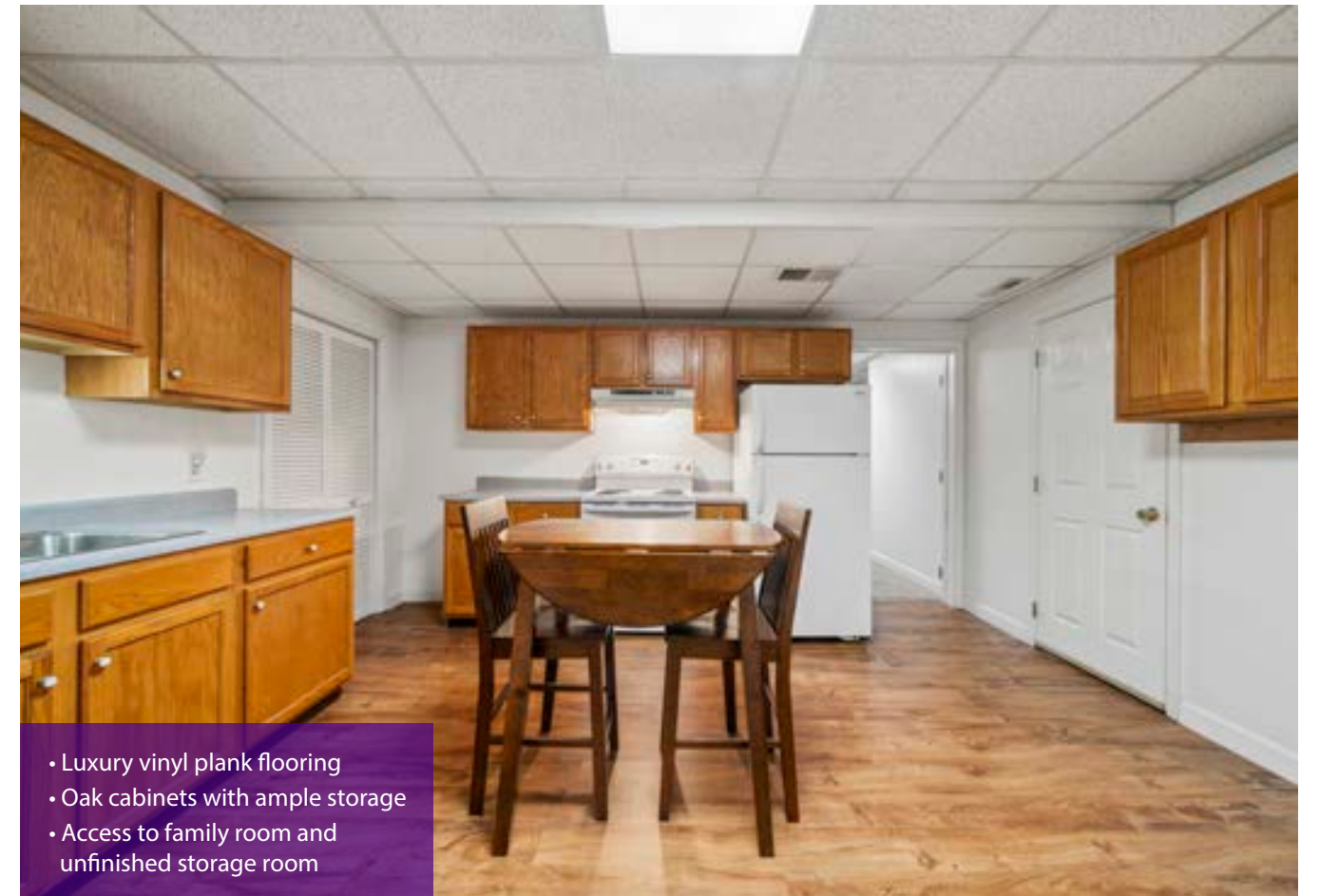
Family Room



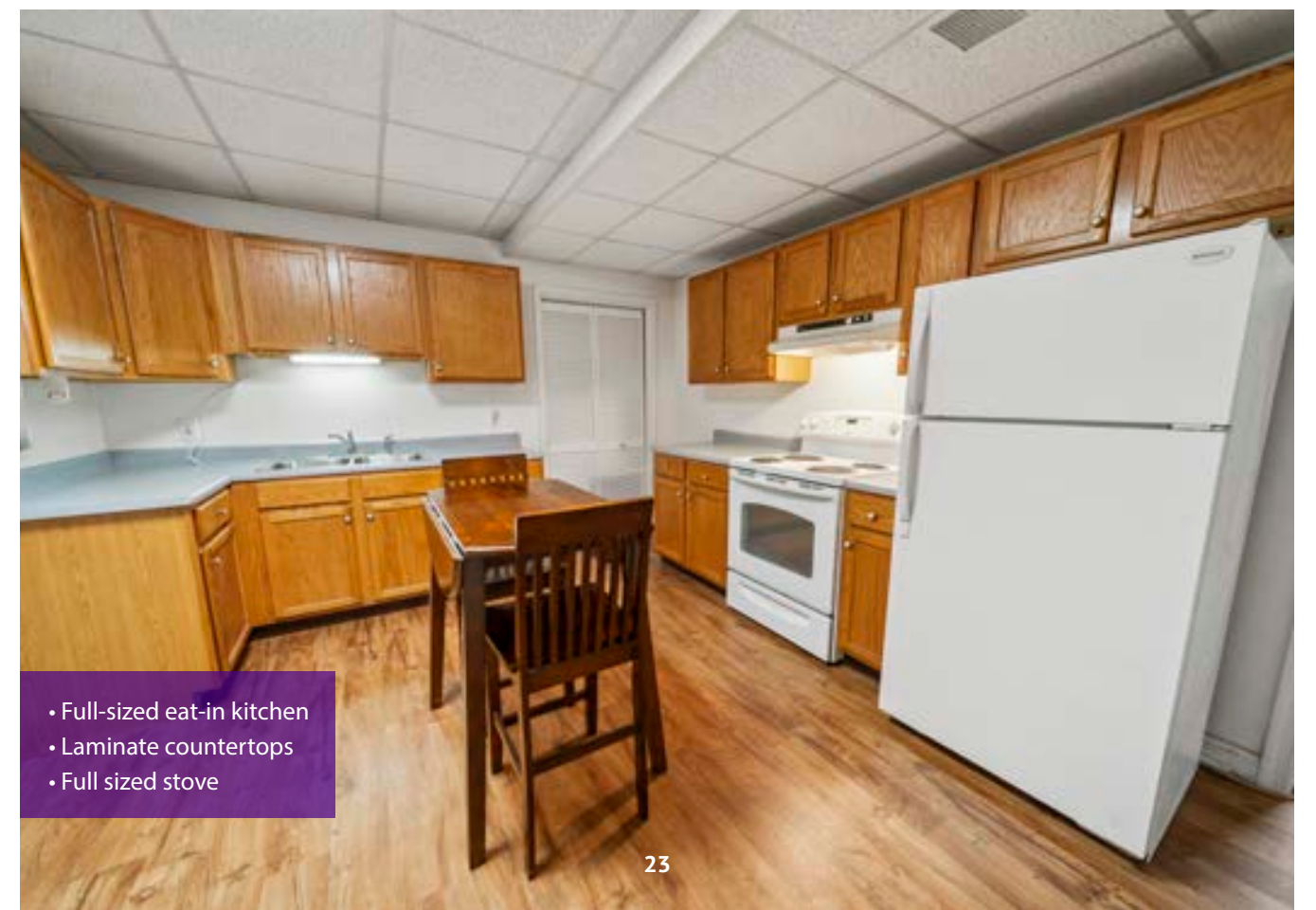
- Updated carpeting
- Two large closets or storage
- Large room with overhead lighting



Basement Kitchen

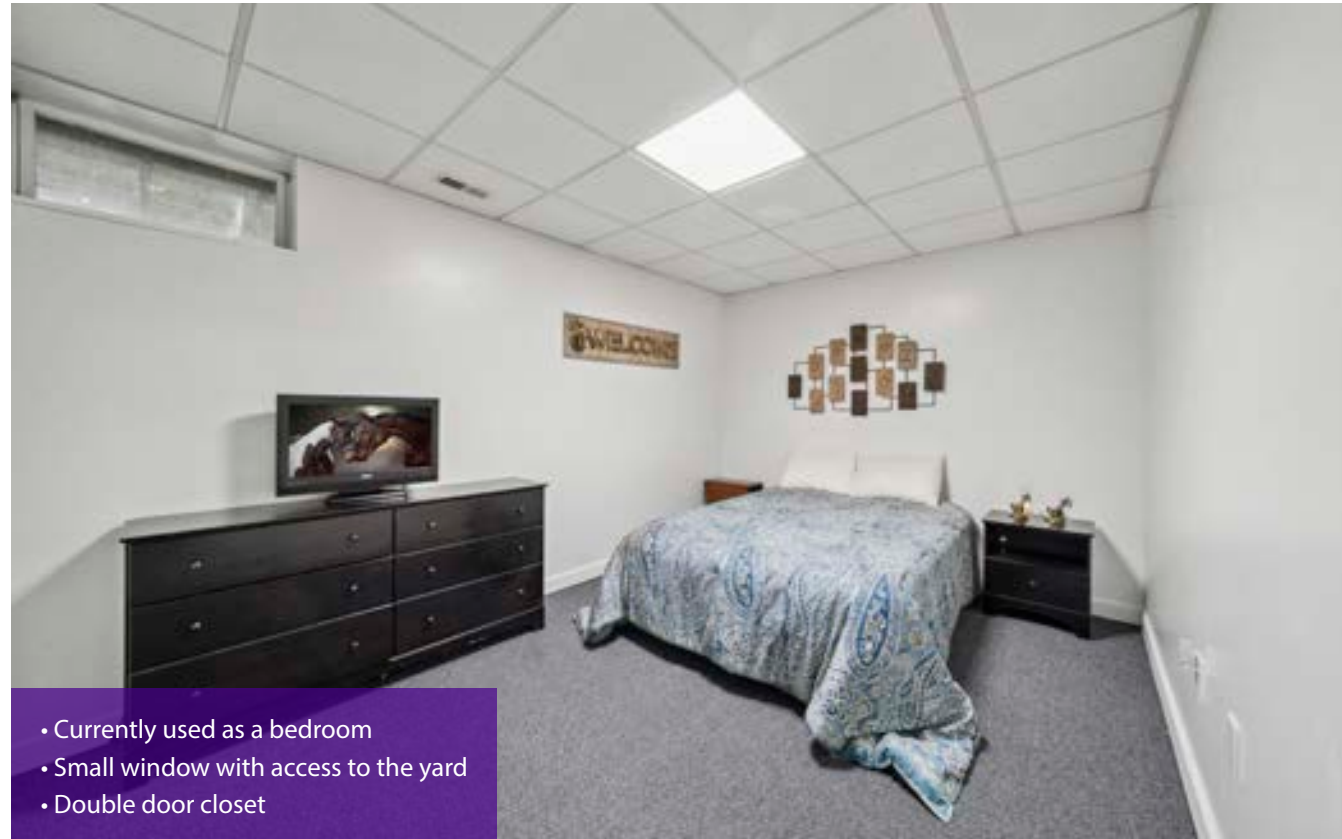


- Luxury vinyl plank flooring
- Oak cabinets with ample storage
- Access to family room and unfinished storage room



- Full-sized eat-in kitchen
- Laminate countertops
- Full sized stove

Flex Room 1



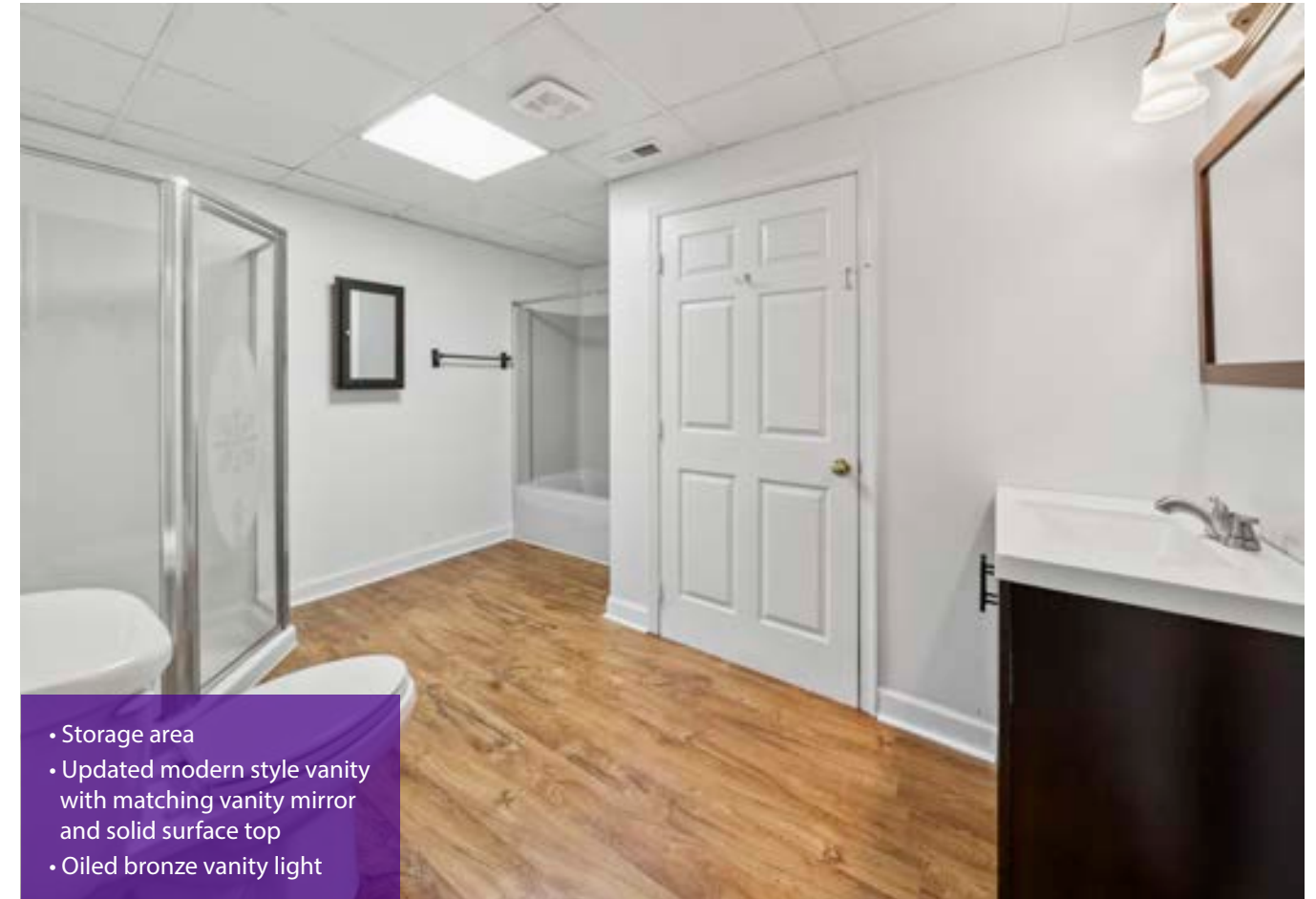
- Currently used as a bedroom
- Small window with access to the yard
- Double door closet

Flex Room 2

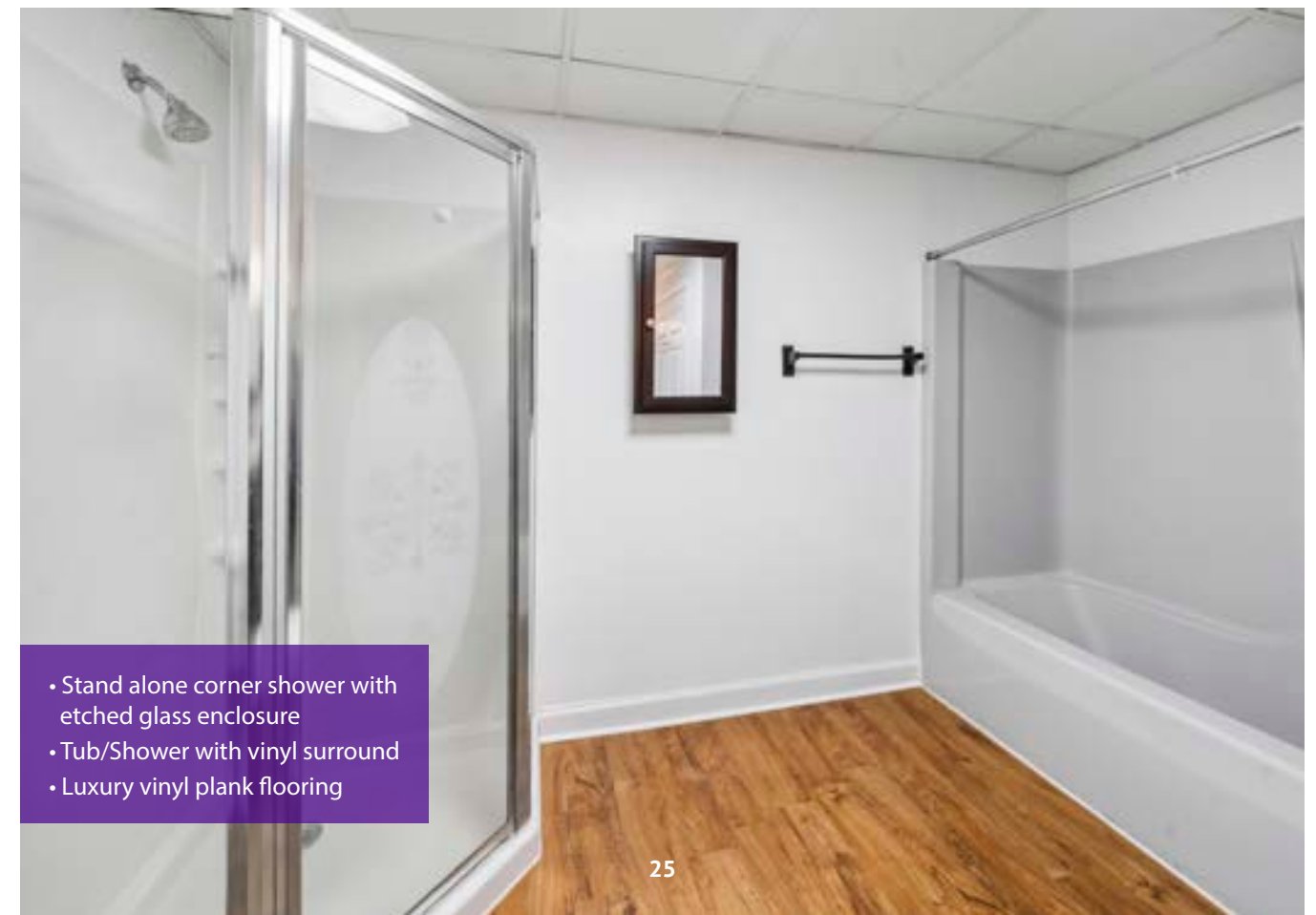


- Currently used as a bedroom
- Two small windows with access to the yard
- Double door closet

Lower Level Bathroom



- Storage area
- Updated modern style vanity with matching vanity mirror and solid surface top
- Oiled bronze vanity light

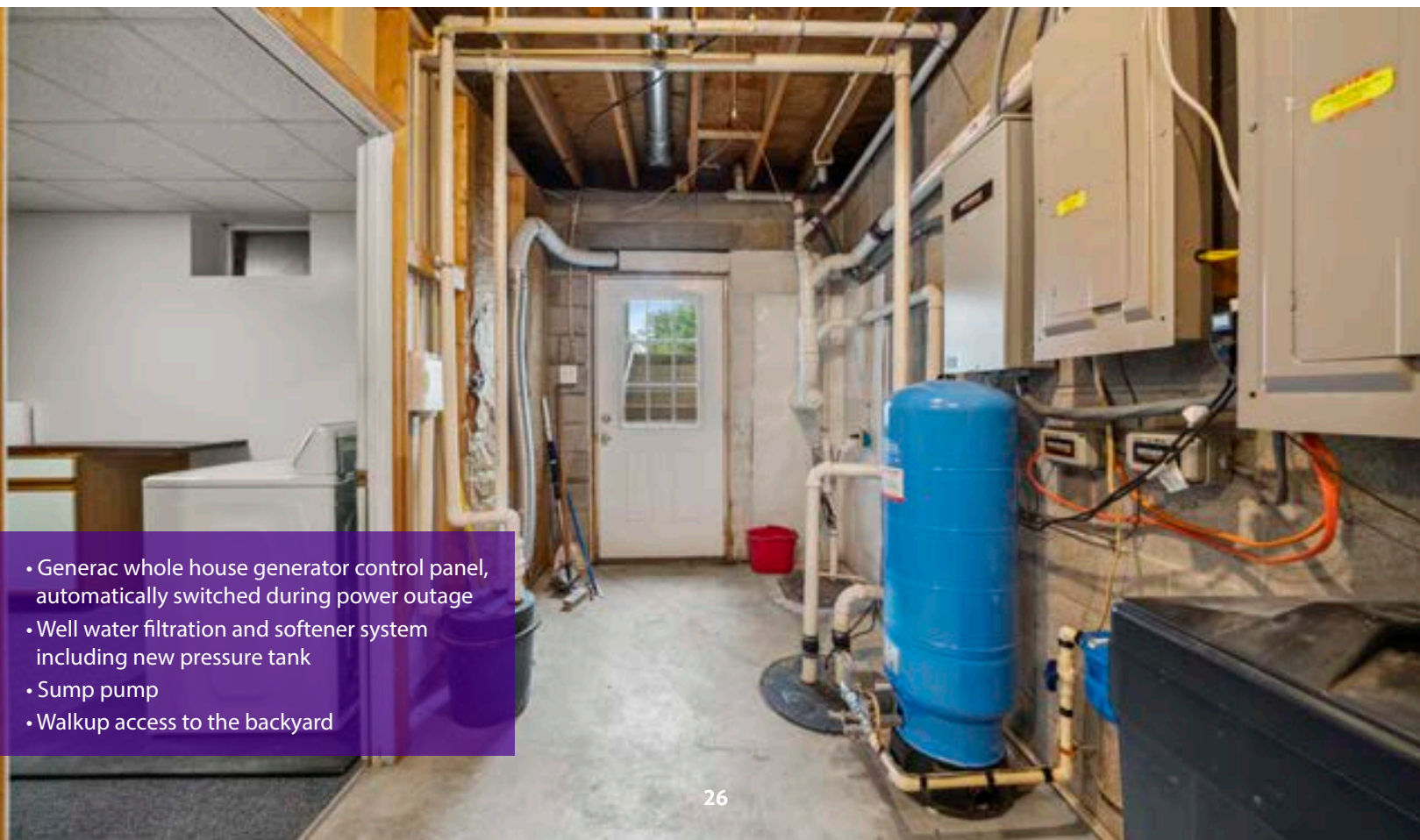


- Stand alone corner shower with etched glass enclosure
- Tub/Shower with vinyl surround
- Luxury vinyl plank flooring

Utility

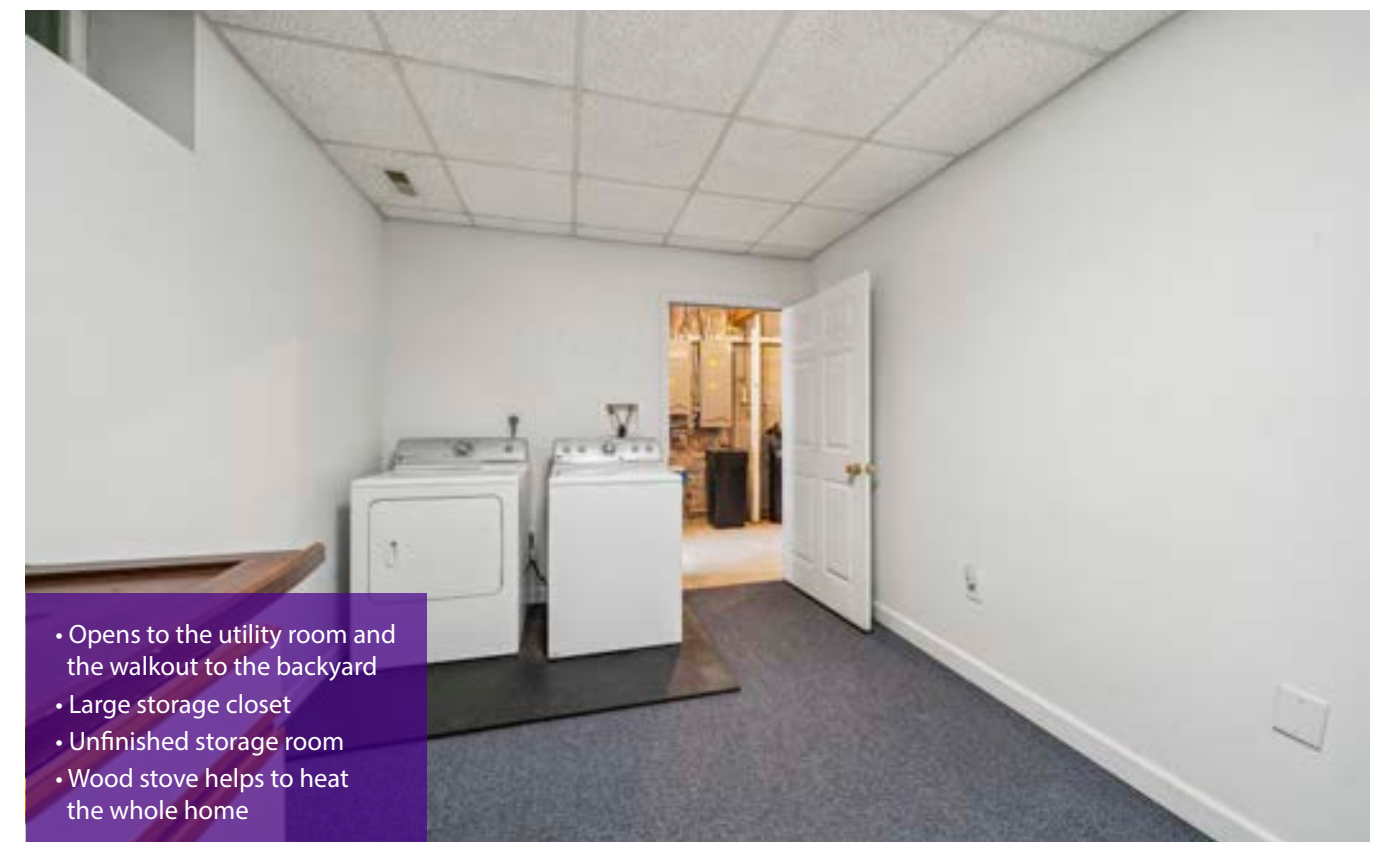


- Unfinished utility room
- Large storage area under the stairs



- Generac whole house generator control panel, automatically switched during power outage
- Well water filtration and softener system including new pressure tank
- Sump pump
- Walkup access to the backyard

Storage



- Opens to the utility room and the walkout to the backyard
- Large storage closet
- Unfinished storage room
- Wood stove helps to heat the whole home

LEGEND

A FARMHOUSE

B STORAGE SHED

C FIREWOOD STORAGE

D CHICKEN COOP

E FOUR-STALL BARN

F INDOOR ARENA

FROST-FREE HYDRANT

TRAILER PARKING

SEPTIC TANK

WELL

PROPERTY BOUNDARY

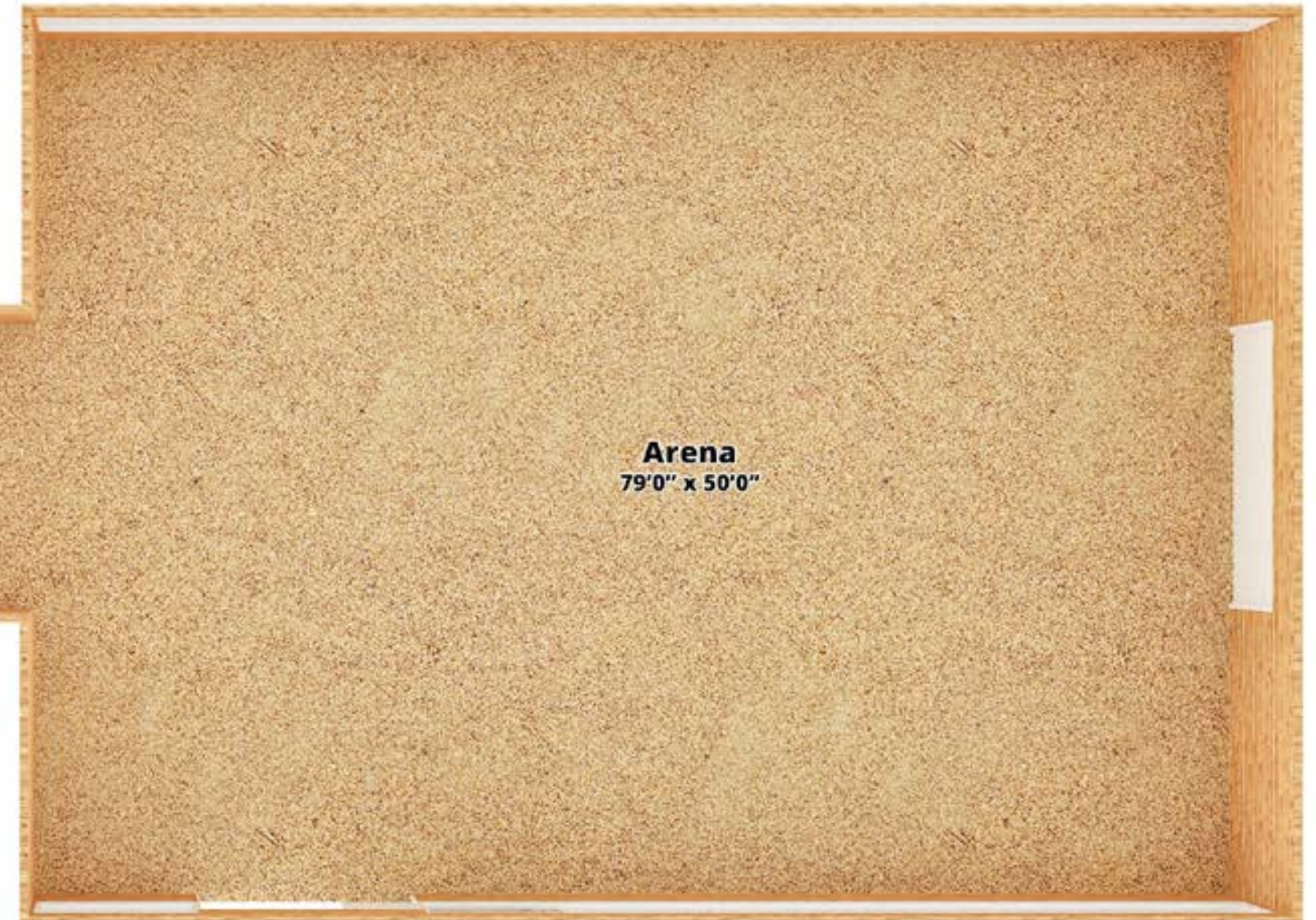
FENCELINE

GATE

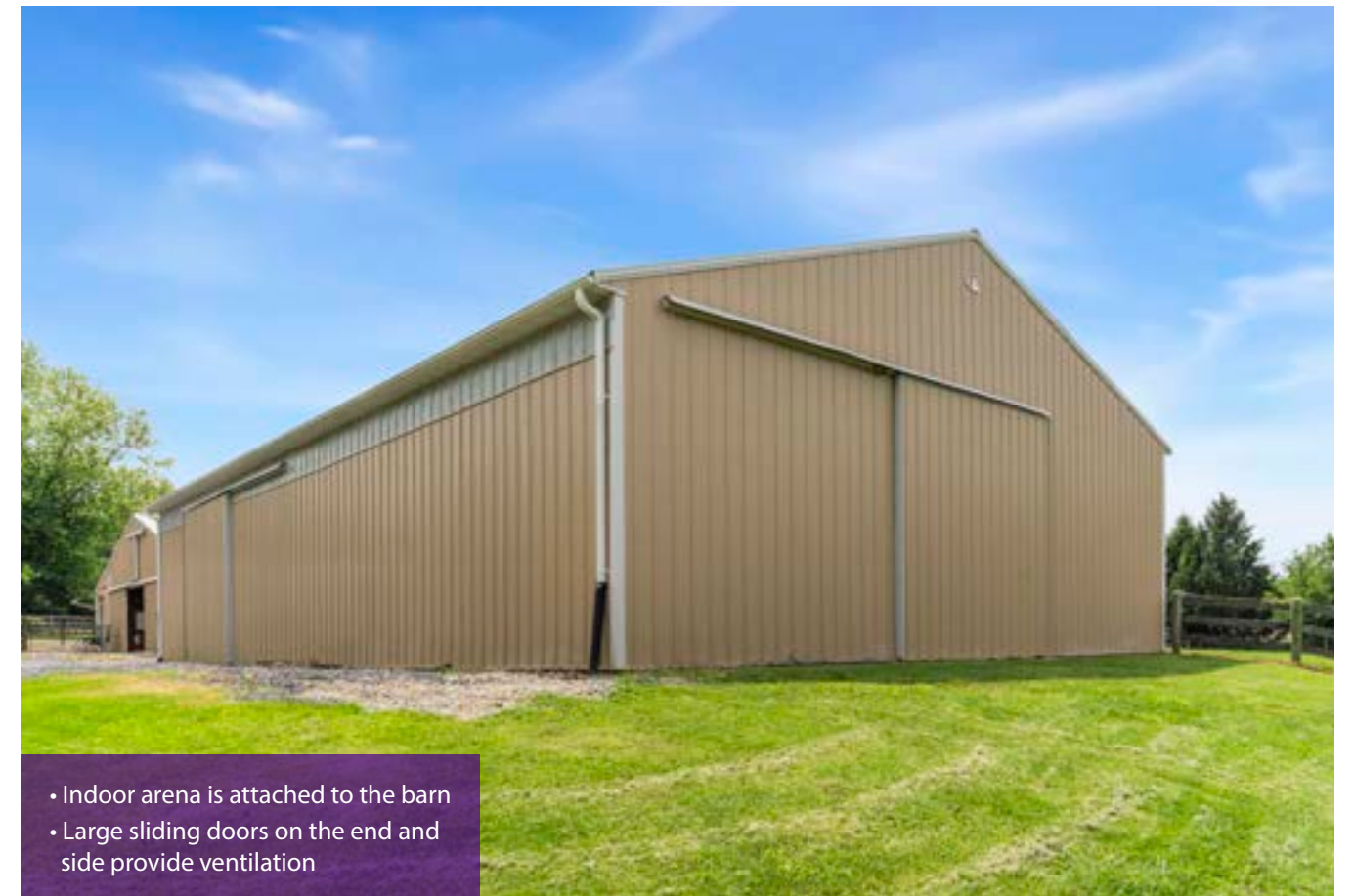


Barn & Arena

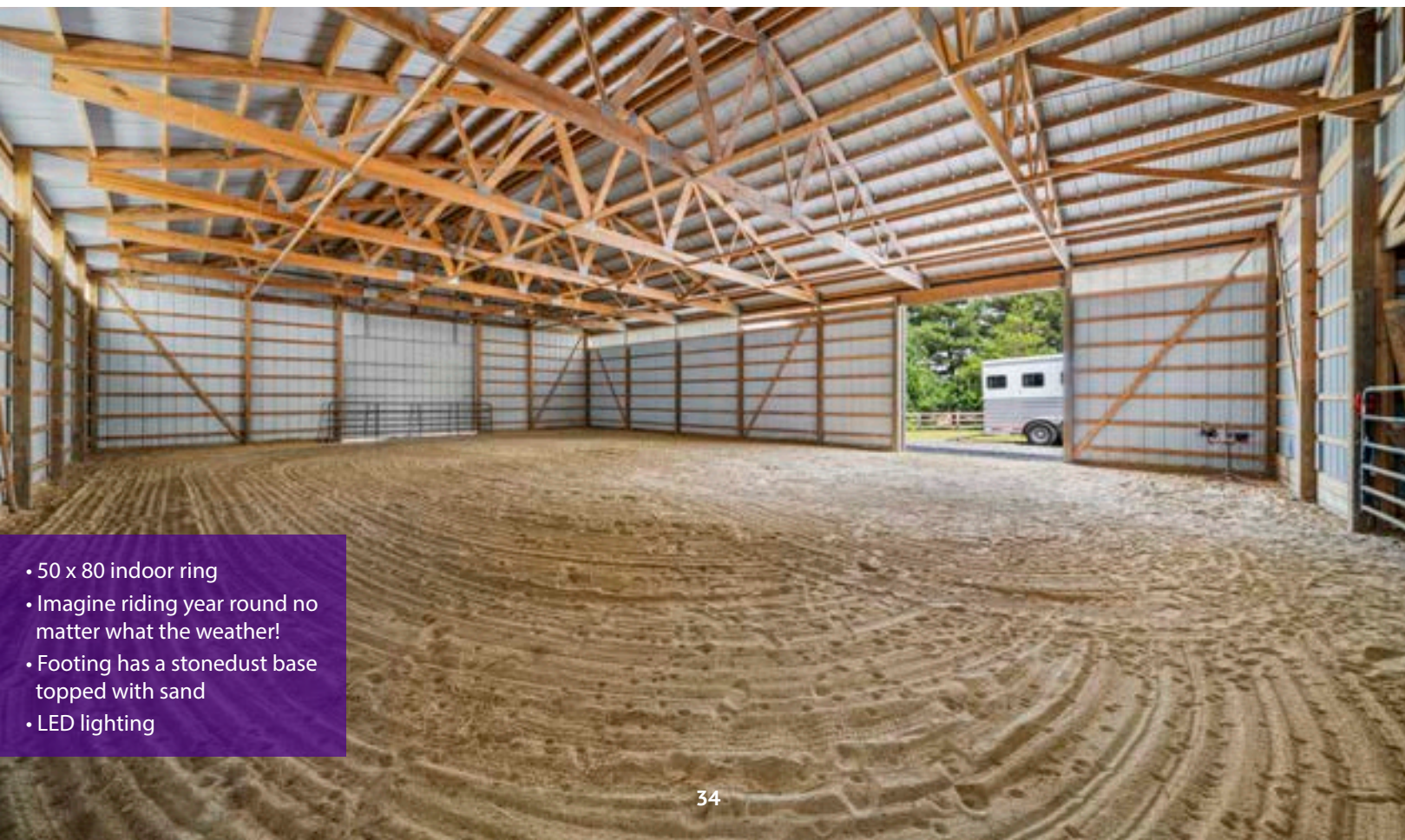
Main Floor



Main Barn - Exterior



Barn - Indoor Arena



- 50 x 80 indoor ring
- Imagine riding year round no matter what the weather!
- Footing has a stonedust base topped with sand
- LED lighting

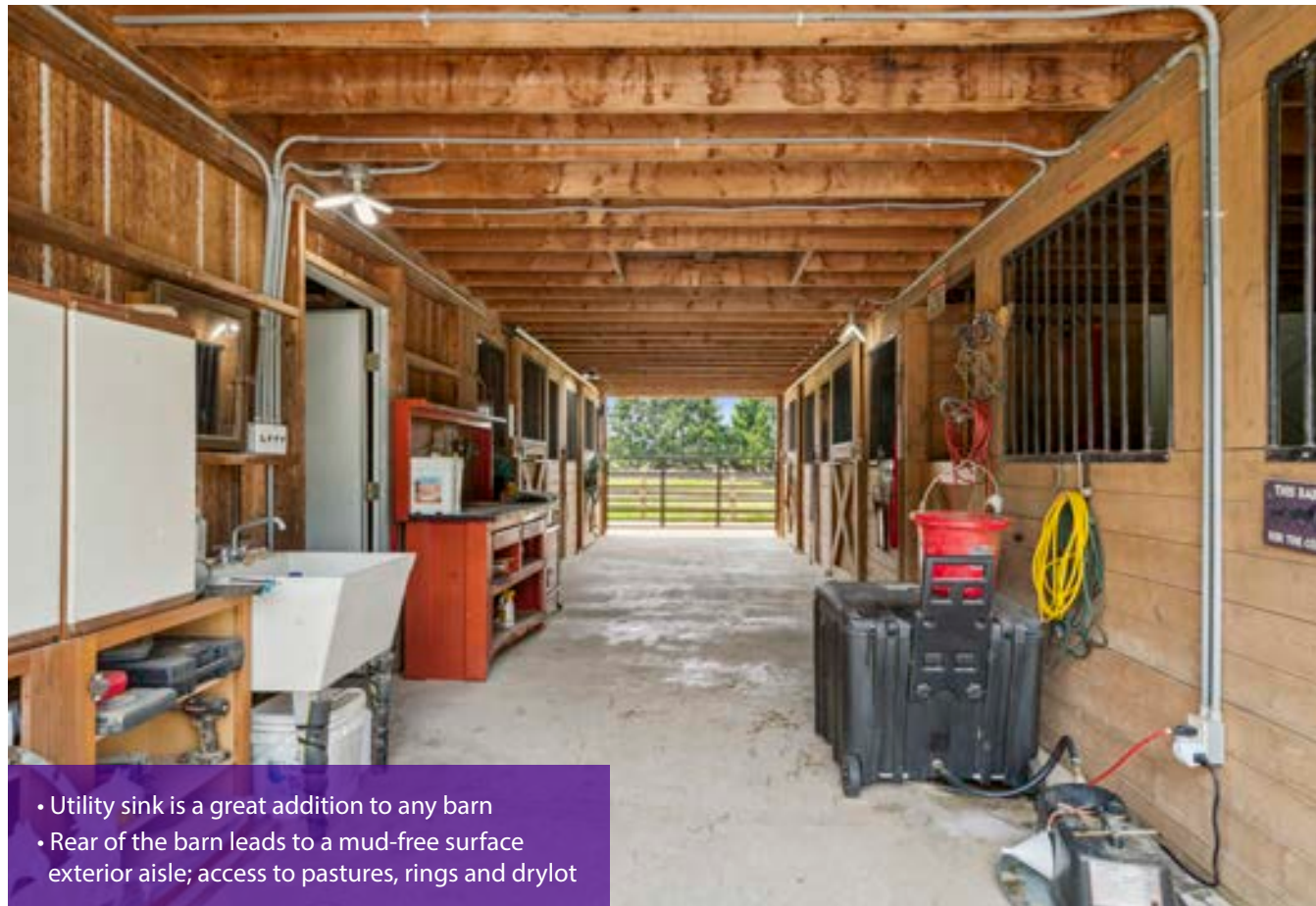


- Attached to the barn via an indoor breezeway

Barn Interior



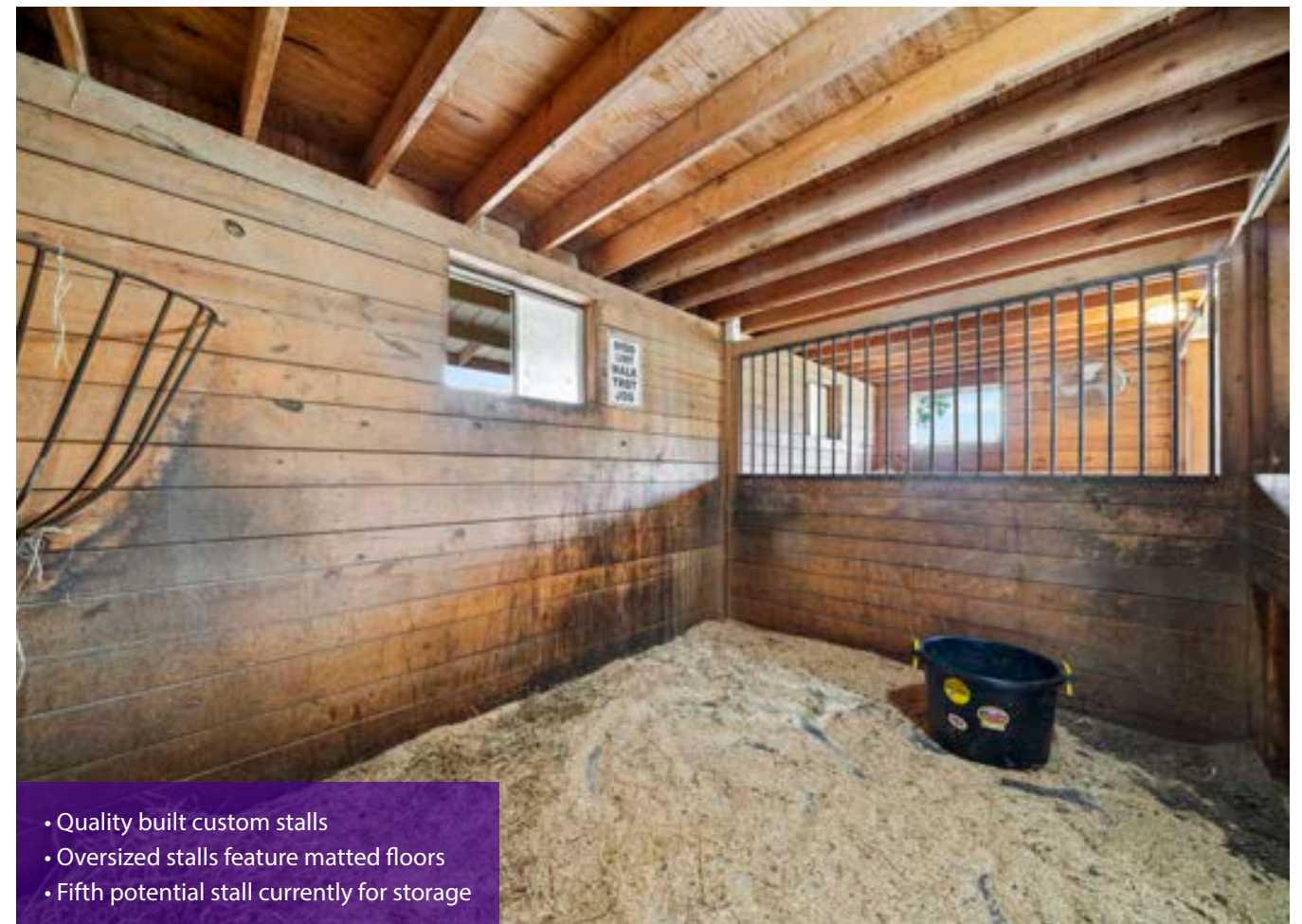
- Beautifully updated 4-5 stall center aisle barn
- LED Lighting
- Concrete center aisle makes for easy clean up



- Utility sink is a great addition to any barn
- Rear of the barn leads to a mud-free surface exterior aisle; access to pastures, rings and drylot



- Feed room features a frost-free hydrant and floor drain



- Quality built custom stalls
- Oversized stalls feature matted floors
- Fifth potential stall currently for storage

Barn - Tack Room



• Tack room with separate exterior door

Barn - Feed Room



• Stairs to the large hay loft

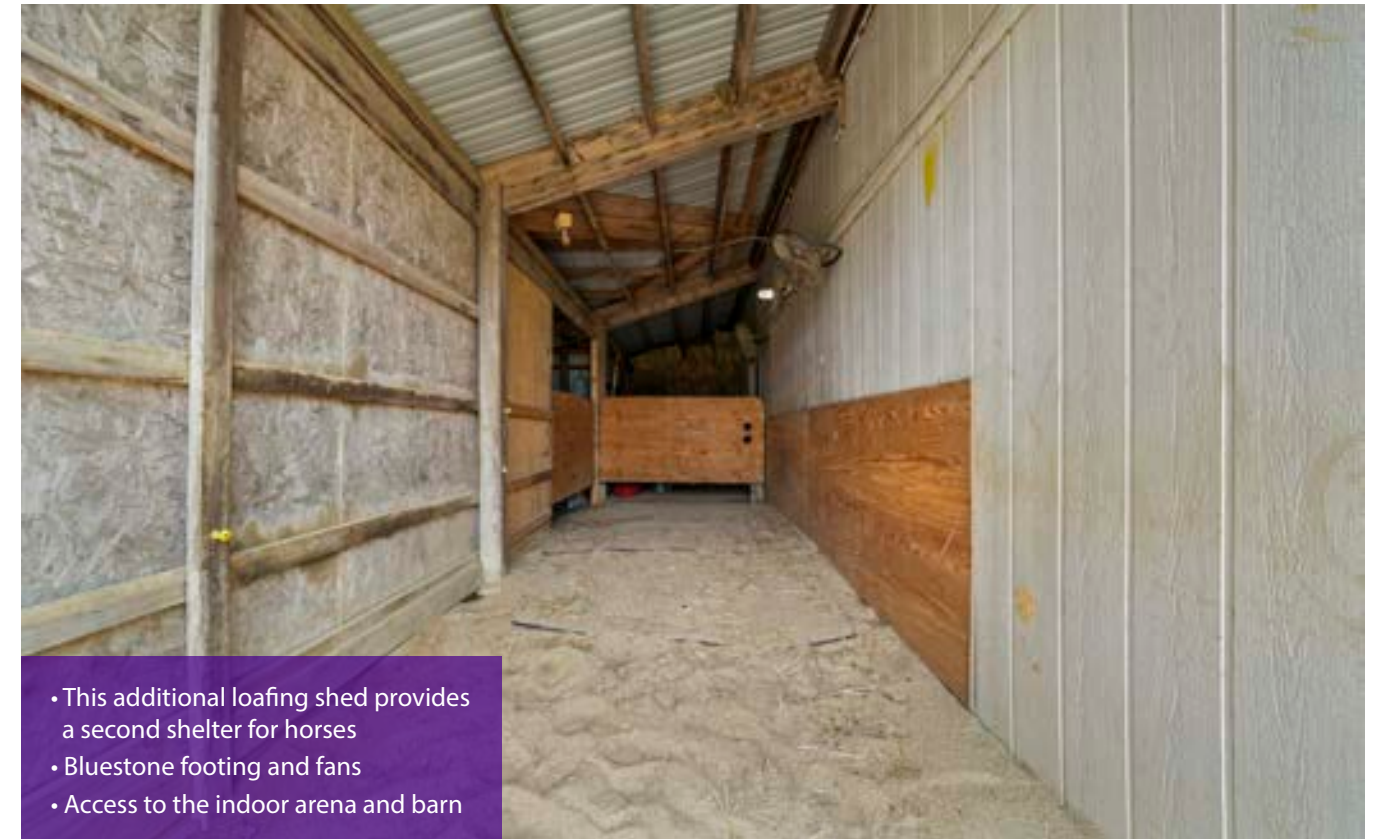


Barn - Storage Room



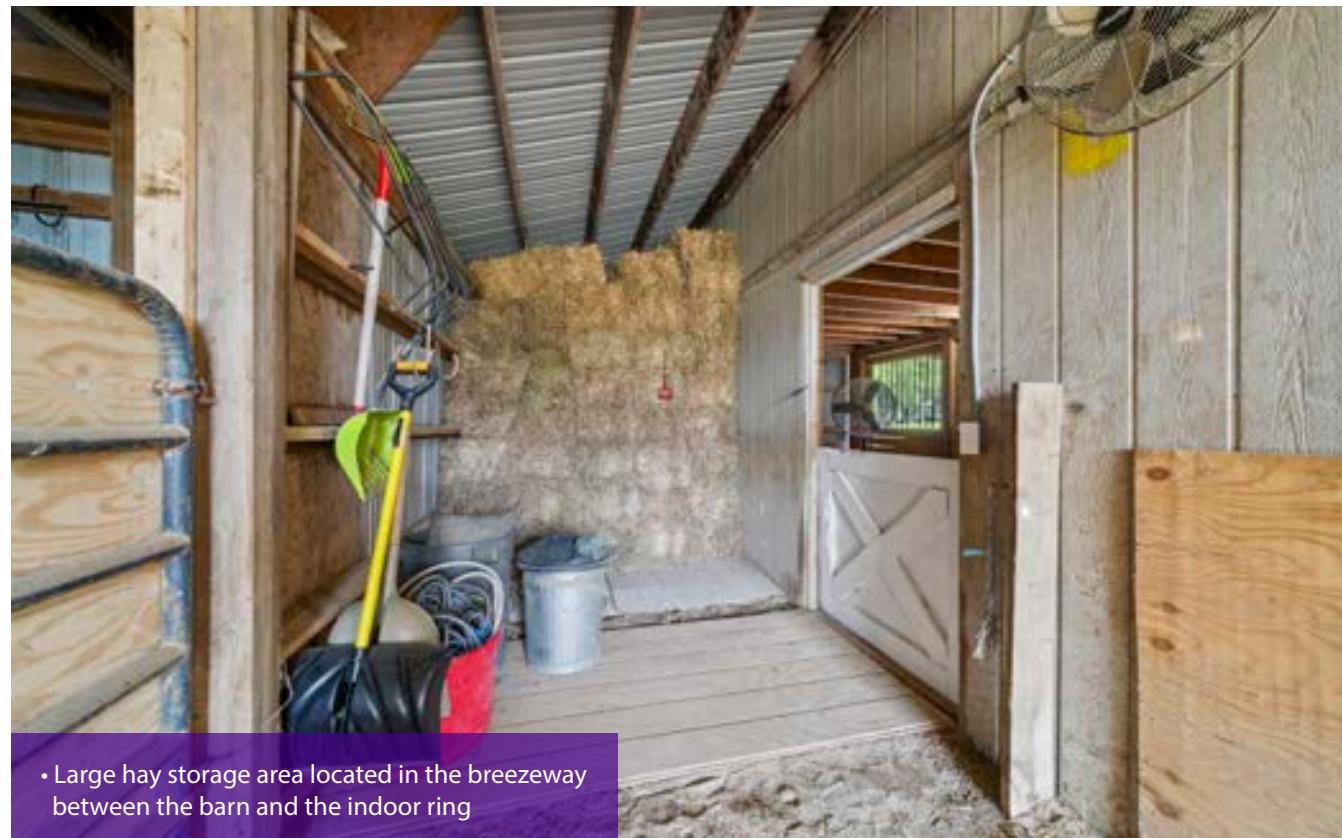
- Can be easily converted back to a 5th stall

Barn - Loafing Shed



- This additional loafing shed provides a second shelter for horses
- Bluestone footing and fans
- Access to the indoor arena and barn

Barn - Hay Storage

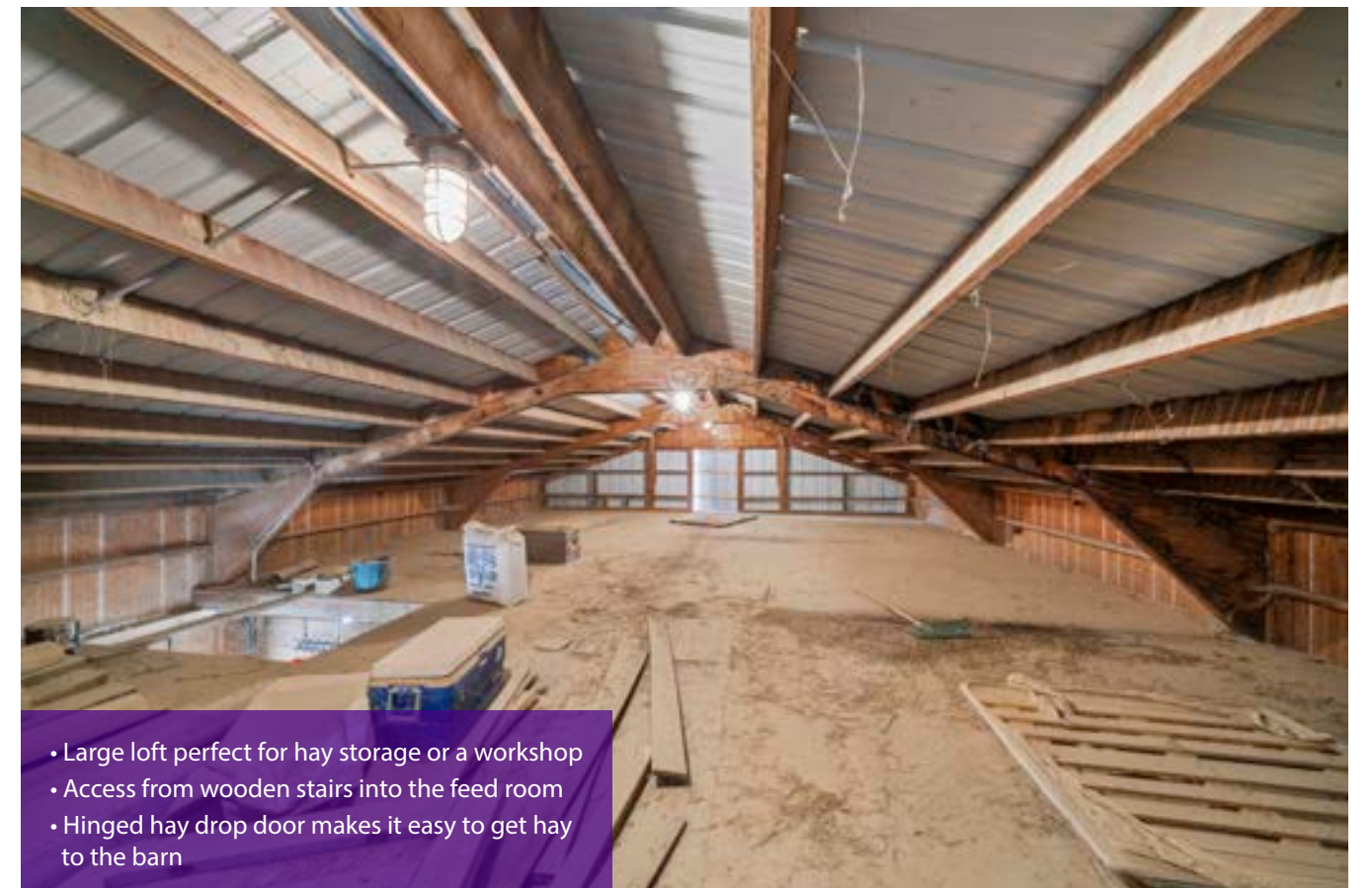


- Large hay storage area located in the breezeway between the barn and the indoor ring

Barn & Arena

Hay Storage

Hay Loft



- Large loft perfect for hay storage or a workshop
- Access from wooden stairs into the feed room
- Hinged hay drop door makes it easy to get hay to the barn

Paddock



• Dry lot attached to the barn has its own run-in shed

Arena / Dry Lot



• Large outdoor ring also serves as a mud-free paddock



• Mud-free footing makes for easy clean and care



• 2nd frost-free hydrant for easy water access



Pasture 1



- Grass pastures have new equine-safe coated electric fencing
- Easy rotational grazing

Pasture 2



- The pastures are connected by a mud-free aisle that opens to the barn

Pasture 3

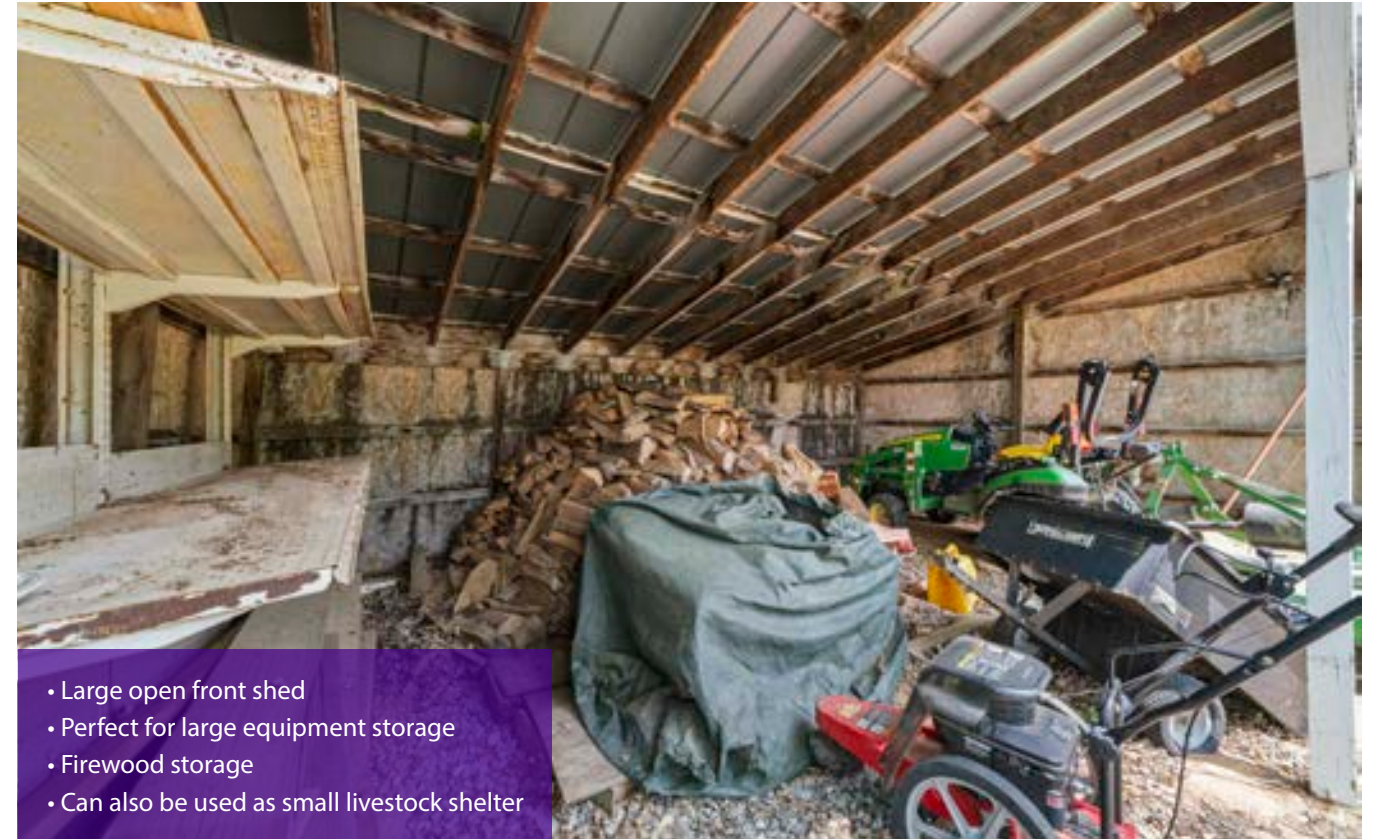


Shed 1



- Enclosed equipment shed with floor
- Double door
- Wood flooring
- Tall ceilings
- Chicken coop attached

Woodshed



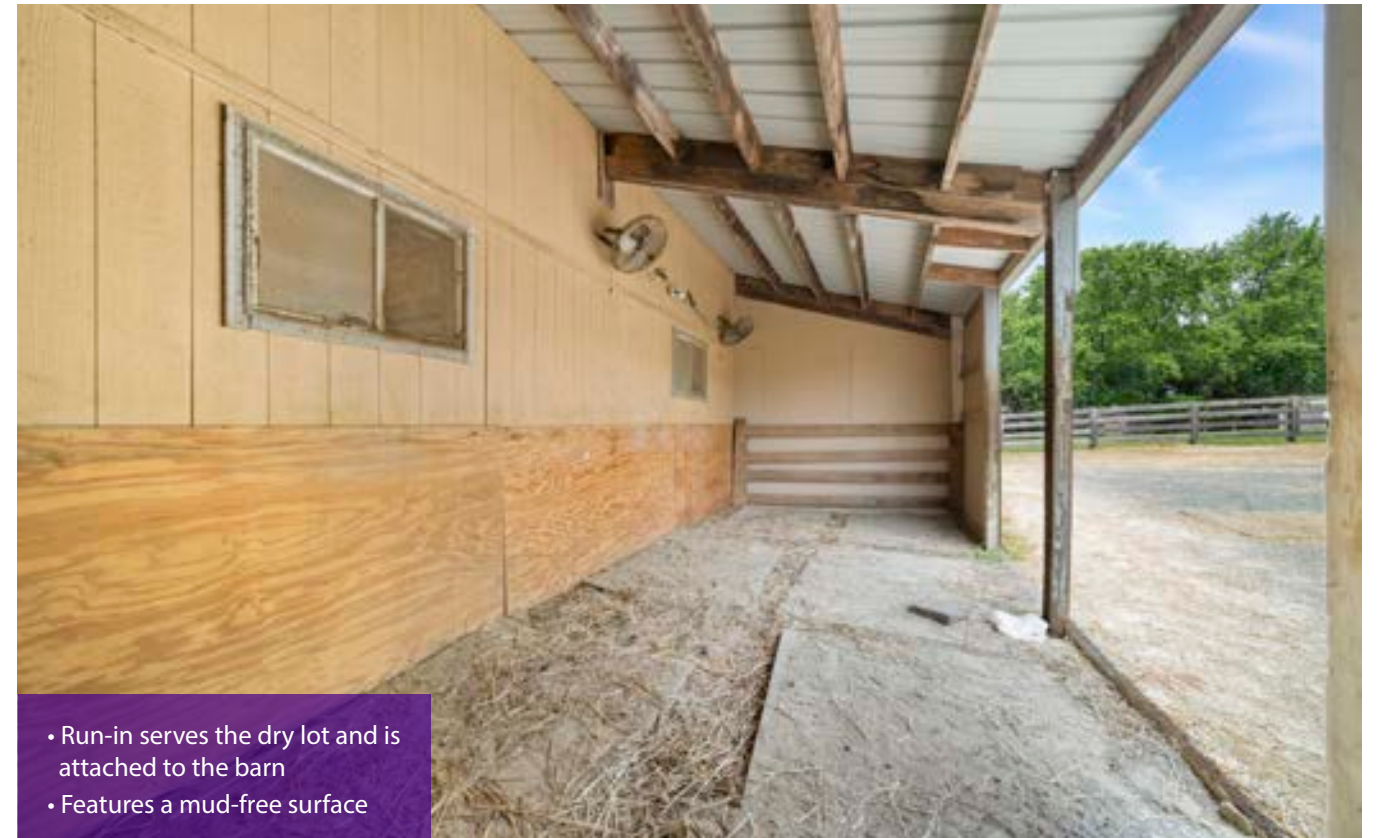
- Large open front shed
- Perfect for large equipment storage
- Firewood storage
- Can also be used as small livestock shelter

Shed 2



- Fully enclosed storage shed
- Large double door opening
- High ceilings
- Newer wood flooring

Run In Shed



- Run-in serves the dry lot and is attached to the barn
- Features a mud-free surface



Elmer A. Wolfe Elementary School
6.2 miles
📍 119 North Main Street
Union Bridge, MD 21791
☎ (410) 751-3307
👤 Tracy Belski



Northwest Middle School
9.4 miles
📍 99 Kings Drive
Taneytown, MD 21787
☎ (410) 751-3270
👤 Mr Scott Lavender

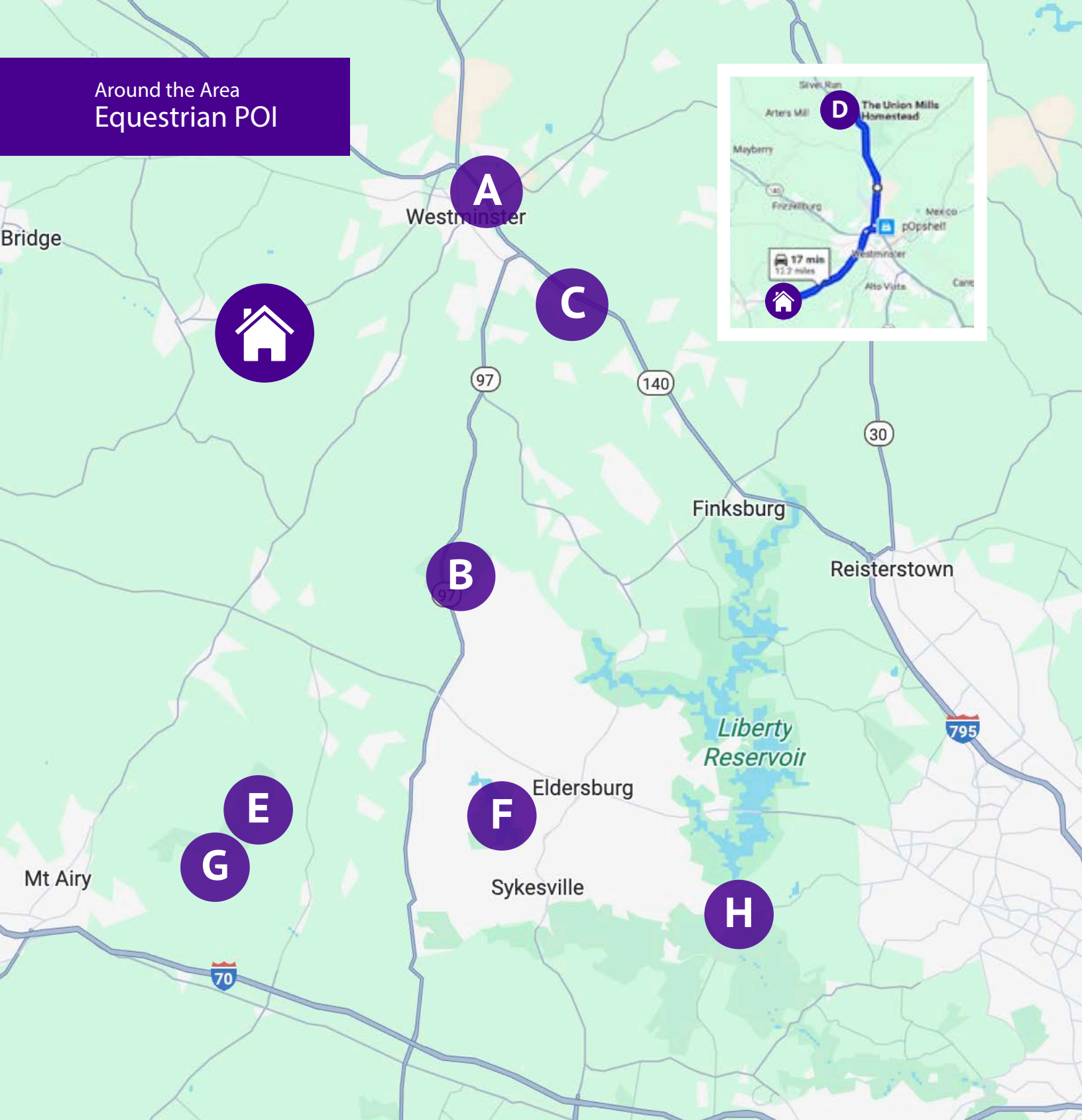


Francis Scott Key High School
5 miles
📍 3825 Bark Hill Road Union
Bridge, MD 21791
☎ (410) 751-3320
👤 Shannon Mobley



**Carroll County Public Library
- Westminster Branch**
6.5 miles
📍 50 E Main Street
Westminster, MD 21157
☎ (410) 386-4490

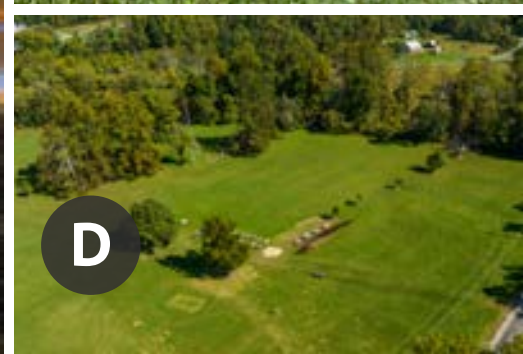


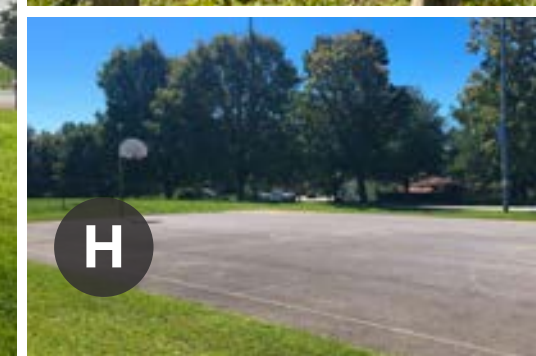
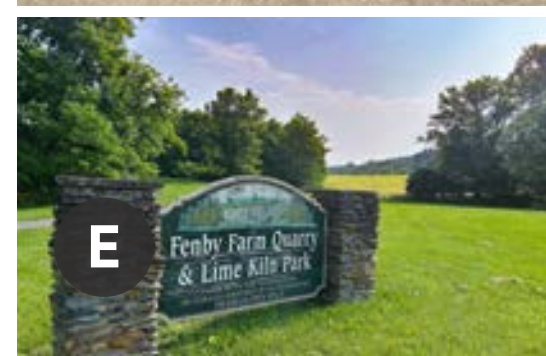
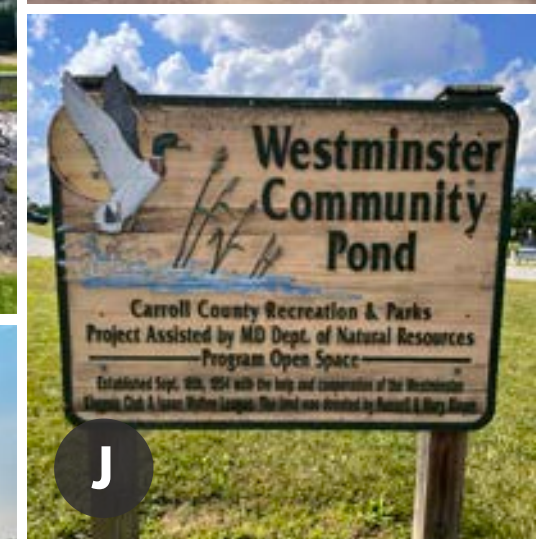
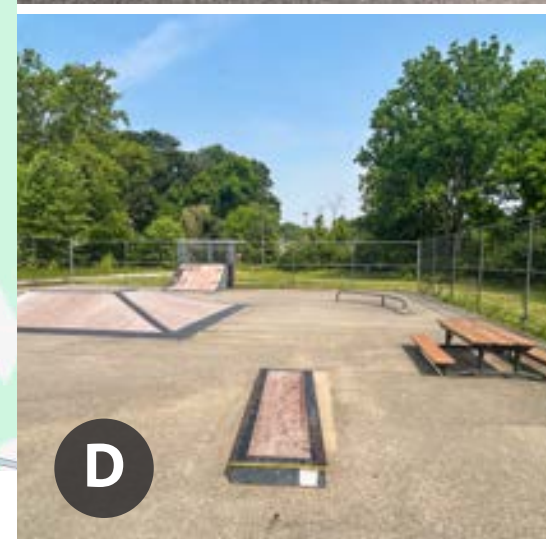
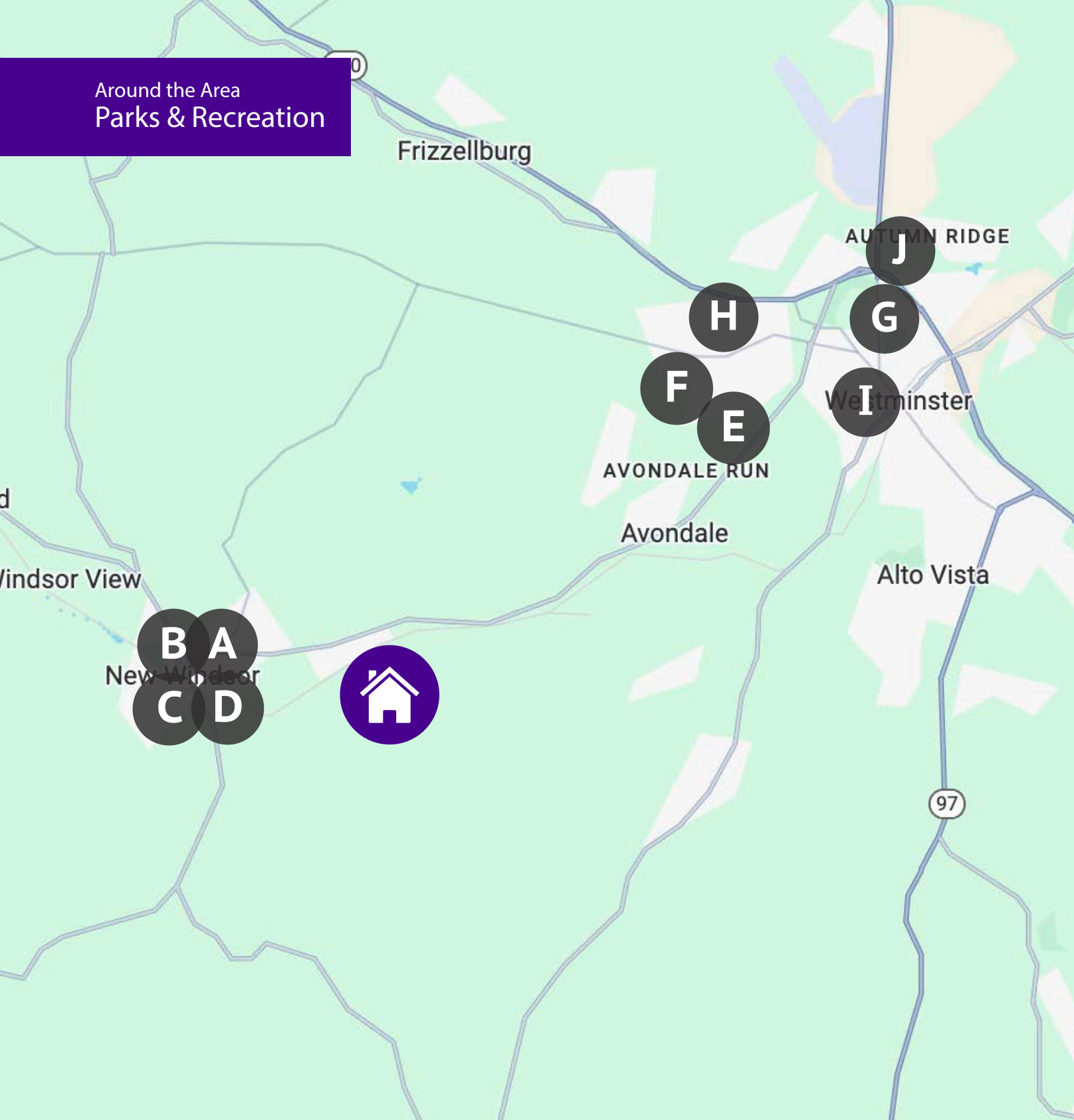


● Equestrian POI

- A** Bowman's Feed Yard
- B** Morgan Run
- C** Tractor Supply
- D** The Union Mills Homestead
- E** Gillis Falls
- F** Piney Run Park

- G** Carroll County Equestrian Center
- H** Patapsco Valley State Park
McKeldin Area



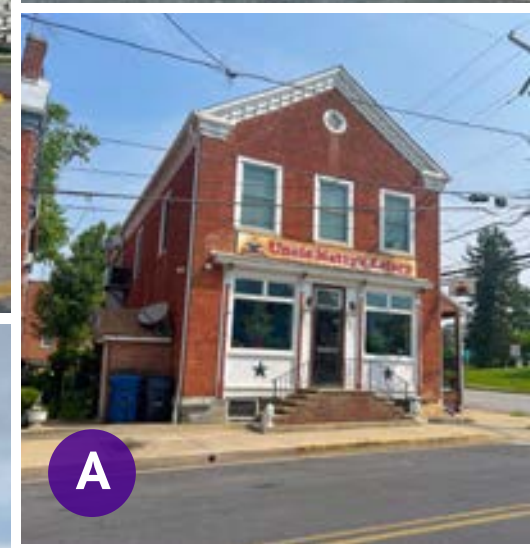
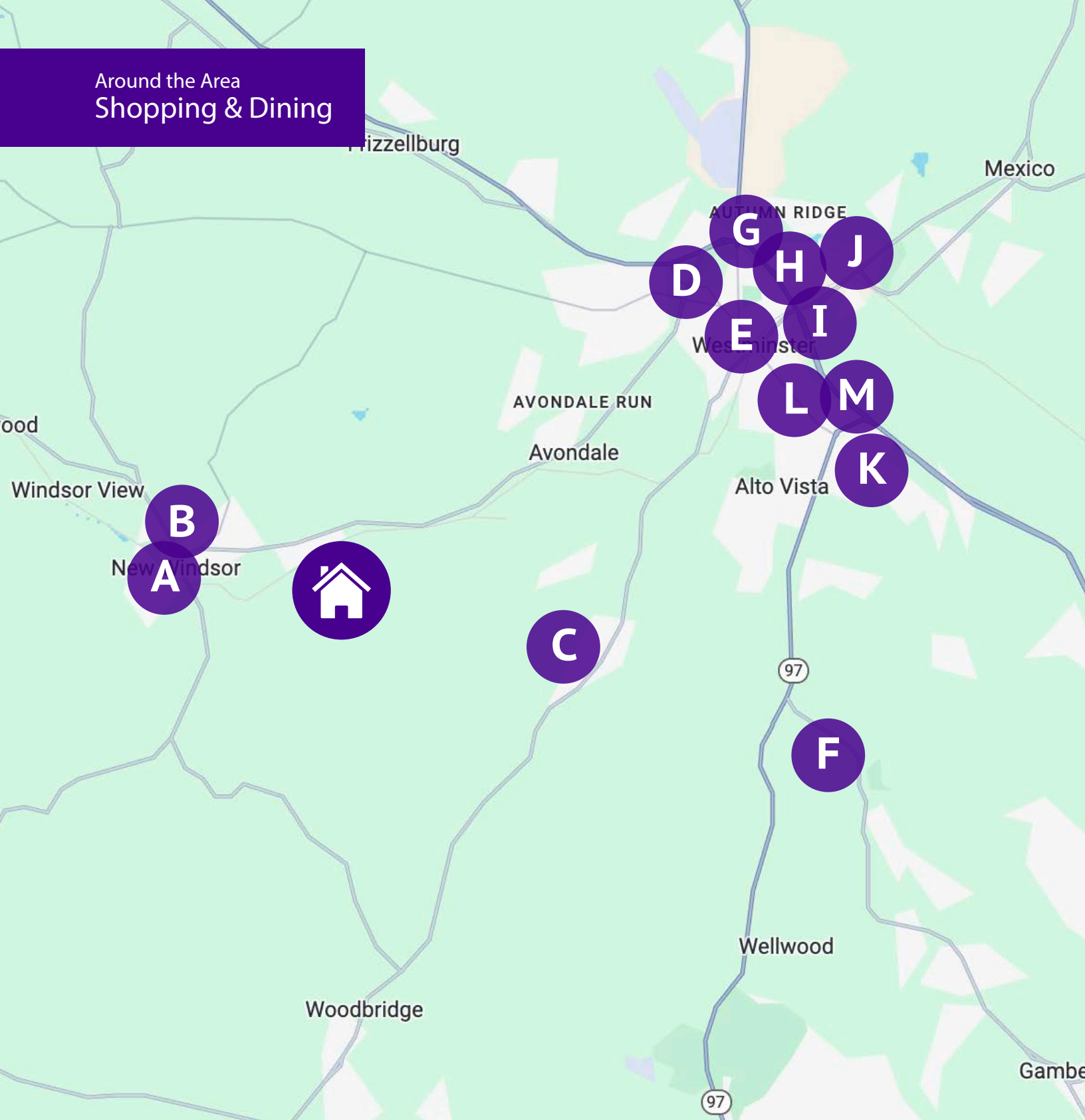


Around the Area Parks & Recreation

● Parks & Recreation

- | | |
|--------------------------------|--------------------------------------|
| A New Windsor Town Park | G Dutterer Family Park |
| B Lions Park Pavilion | H Jaycee Park |
| C Sulphur Springs Park | I King Park |
| D New Windsor Skatepark | J Westminister Community Pond |
| E Lime Kiln Park | |
| F Tahoma Farm Park | |

Around the Area Shopping & Dining



● Shopping & Dining

- | | | |
|----------------------------------|---------------------------------------|--------------------------------------|
| A Uncle Matty's Eatery | F Bullock's Restaurant | K The Stables at Westminister |
| B Frankies Bar and Grill | G Carroll Plaza | L Westminister Station |
| C Old Westminister Winery | H Westminister Crossing | M Cranberry Square |
| D College Square | I Westminister Shopping Center | |
| E Belisimos | J Walmart | |



Thinking of Selling Your Home?

Put Hagan Realty to work for you, and you'll be moved!

Services Include

- HDR Photos
- 3D Tours
- 4K Property Tours
- Property Guides
- Targeted Social Ads
- Custom Websites
- Site Maps
- Arial Imagery
- Floor Plans
- Open Houses
- MLS Syndication
- Custom Signs

In an ever-evolving real estate market, Hagan Realty stands out as your go-to partner for selling your home at the best price, in the least time, and with unparalleled success. We go beyond just putting a 'For Sale' sign on your lawn.

Our in-house experts utilize state-of-the-art HDR photography, 4K video, and 3D tours to make your property shine in its best light. Forget generic listings; every home gets a custom website focused solely on showcasing its unique features, and we employ targeted social media ads to reach potential buyers across multiple platforms. We arm visiting buyers with comprehensive property guides detailing everything from your home's amenities to the local schools, and our open houses effectively reach nearly half of all home buyers in the market area.

From the sky with FAA-licensed drone pilots to the ground with full-color, furnished floor plans, we've got every angle covered. If you want your property to stand out and attract top-dollar offers, let Hagan Realty's unmatched tools and expertise work for you.

Contact us today to learn more.

If you are currently under a written contract to use another real estate broker exclusively, please disregard this notice. It is not our intention to solicit other real estate brokers' clients.

Thank You for Visiting

Thank you for viewing my listing here at 1392 Wakefield Valley Road.

If you have any questions regarding this property, or would like to make an offer, please either contact me directly or have your agent do so if you are represented.

Denise Parsons

Realtor

Cell 240.506.1713
Office 866.Hagan.01 x727
Fax 301.540.1429
DParsons@HaganRealty.com
www.HaganRealty.com



All information contained in this booklet is deemed reliable but not guaranteed. All prospective purchasers are strongly encouraged to perform all necessary due diligence, prior to writing an offer.



For more information visit

www.1392WakefieldValley.com

